



POSITION DESCRIPTION

POSITION TITLE	Associate Professor (Level D) in Agribusiness
POSITION NUMBER	00059589
POSITION LEVEL	Academic Level D
GROUP	Griffith Business School
ELEMENT	Griffith Asia Institute
EMPLOYMENT TYPE	Full time
EFFECTIVE DATE	November 2018

THE GROUP

Griffith Business School is committed to the delivery of outstanding business education and research through engagement with industry, government and the social communities we serve, and to do so in ways that contribute to a prosperous, equitable and sustainable future. In accordance with the [Forward-Focused, Future-Ready Griffith Business School Strategy 2017 - 2020](#) our core commitment is to delivering on the four areas of strategic priority: delivering a remarkable student learning experience; producing high-impact research; enhancing our engagement; and strengthening our staff. Griffith Business School is an accredited member of AACSB International — [The Association to Advance Collegiate Schools of Business](#). In the 2018 QS World University Subject Rankings, our Hospitality and Leisure Management subjects were ranked No.1 in Australia and No. 11 globally. In the prestigious ARWU subject rankings, our Tourism and Hospitality program was ranked at No. 2 globally. We have further affirmed ourselves as a high quality education provider through the 2018 Shanghai Ranking's Global Ranking of Academic Subjects, which evaluated over 4,000 universities worldwide. Griffith Business School achieved No. 1 in Australia and No. 2 in the world for Hospitality and Tourism; a Top 75 placing for public administration; Top 100 for Political Sciences; Top 150 for Management and Business Administration; and Top 300 for Economics. The School is committed to high quality business and public sector education and research, with a special focus on sustainable business, responsible leadership and business in Asia.

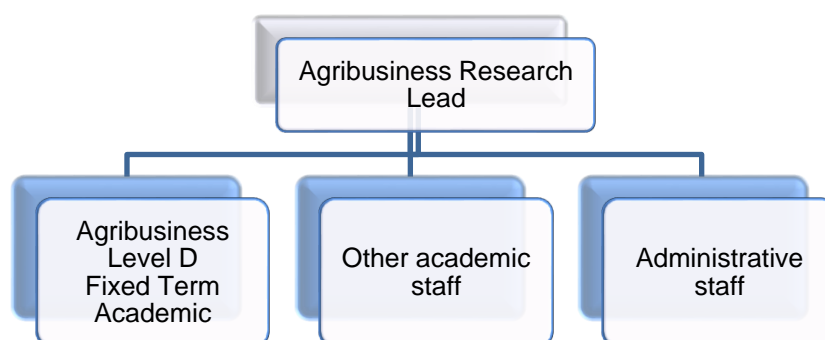
THE INSTITUTE

The Griffith Asia Institute (GAI) is an internationally recognised research centre in the Griffith Business School reflecting the University's longstanding commitment and future aspirations for the study of and engagement with nations of Asia and the Pacific. The Institute's vision is to be the informed voice leading Australia's strategic engagement in the Asia Pacific - cultivating the knowledge, capabilities and connections that will inform and enrich Australia's Asia-Pacific future. GAI does this by:

- Conducting and supporting excellent and relevant research on the politics, security, economies and development of the Asia-Pacific region
- Facilitating high level dialogues and partnerships for policy impact in the region;
- Leading and informing public debate on Australia's place in the Asia Pacific; and
- Shaping the next generation of Asia-Pacific leaders through positive learning experiences in the region.

Academic rigour and independence are key components underlying GAI's research. The Institute aims to build our expertise and develop a culture of collaborative research that has economic and social value for impact.

REPORTING RELATIONSHIPS



POSITION OBJECTIVES

As an Associate Professor in Agribusiness, you will: have an outstanding profile in research and innovation; have made a significant contribution to the sector; be highly committed to excellence in applied research projects, high-impact publications and executive education; and will actively and effectively supervise honours and postgraduate research student projects.

The position will commence with a research-focused profile in which the appointee will be required to undertake research in the area of agribusiness and make a significant contribution to the development of the agribusiness research stream located in the Griffith Asia Institute. The contribution to research outcomes includes grant applications, project leadership, academic and industry publications, and external engagement activities. The successful applicant will also be required to undertake some teaching and higher degree research supervision. Specific work allocations will be reviewed in alignment with the operational requirements of the Griffith Business School and the Griffith Asia Institute.

KEY ACCOUNTABILITIES

Play a key leadership role in the agribusiness research program. This includes:

- Securing significant competitive research funding in Australia and the Asia-Pacific region (specific KPTs to be confirmed).
- Increasing the University's impact in academic and industry-focused publications.
- Contributing to HDR on-time completions as well as building a commencement pipeline in the areas of agribusiness.
- Generate a minimum of 2 industry-funded or partly funded PhD scholarships.
- Contributing to University executive education programs targeted at the agribusiness sector, discipline-specific masterclasses, and workshops.
- Strengthen relationships between the agribusiness disciplines and the broader external governments and industry.
- Working with the Agribusiness team to establish a sustainable program that develops industry supervised PhDs.
- Maintaining fair, ethical and professional work practices in accordance with the University Code of Conduct.
- Supporting compliance with relevant legislation and University policy and procedures, including equity and health and safety and exhibit good practice in relation to same.

- Other initiatives as directed.

SELECTION CRITERIA

Essential:

- PhD in Agricultural Economics, Agronomy, Management or other relevant area.
- Proven track record in attracting competitive national and international research grant funding.
- Demonstrated track record of success in supervising HDR candidates to completion.
- Demonstrated success in achieving impact through engagement with public and private sector organisations.
- Evidence of outstanding quality research, including high-quality outputs.
- Proven experience in developing and teaching executive education courses in the area of Agribusiness.
- Effective communication and interpersonal skills and a demonstrated ability to work in a collegial manner and contribute to the positive culture and aspirations of the University.

Desirable:

- Demonstrated leadership experience in an academic or professional context, with a strong record of mentoring or supervision of more junior colleagues.
- Professional agricultural science qualification – horticulture or agronomy.

BENEFITS AND CONDITIONS

The following links provide access to information regarding the range of benefits enjoyed by Griffith staff and also key information regarding employment conditions.

BENEFITS	CONDITIONS
<ul style="list-style-type: none"> • Education Assistance for General staff • Health plan • Salary Packaging • Superannuation 	<ul style="list-style-type: none"> • Code of Conduct • Academic Staff Enterprise Agreement • Professional and Support Staff Enterprise Agreement • Fairwork Australia Information Statement

Griffith is committed to diversity and inclusion for people from all backgrounds and identities and committed to the recognition, values and contribution of the First People of this nation.

Griffith offers professional development opportunities to support employees in their career progression and offers an excellent working environment that supports flexible working arrangements.

For more benefits and conditions information please refer to the web link below:

[Griffith University | Pay, conditions and benefits > Employment](#)