

**Omar Ameer**  
**Director Regulatory Performance**  
**Dept of Environment and Heritage Protection**



**Presentation**

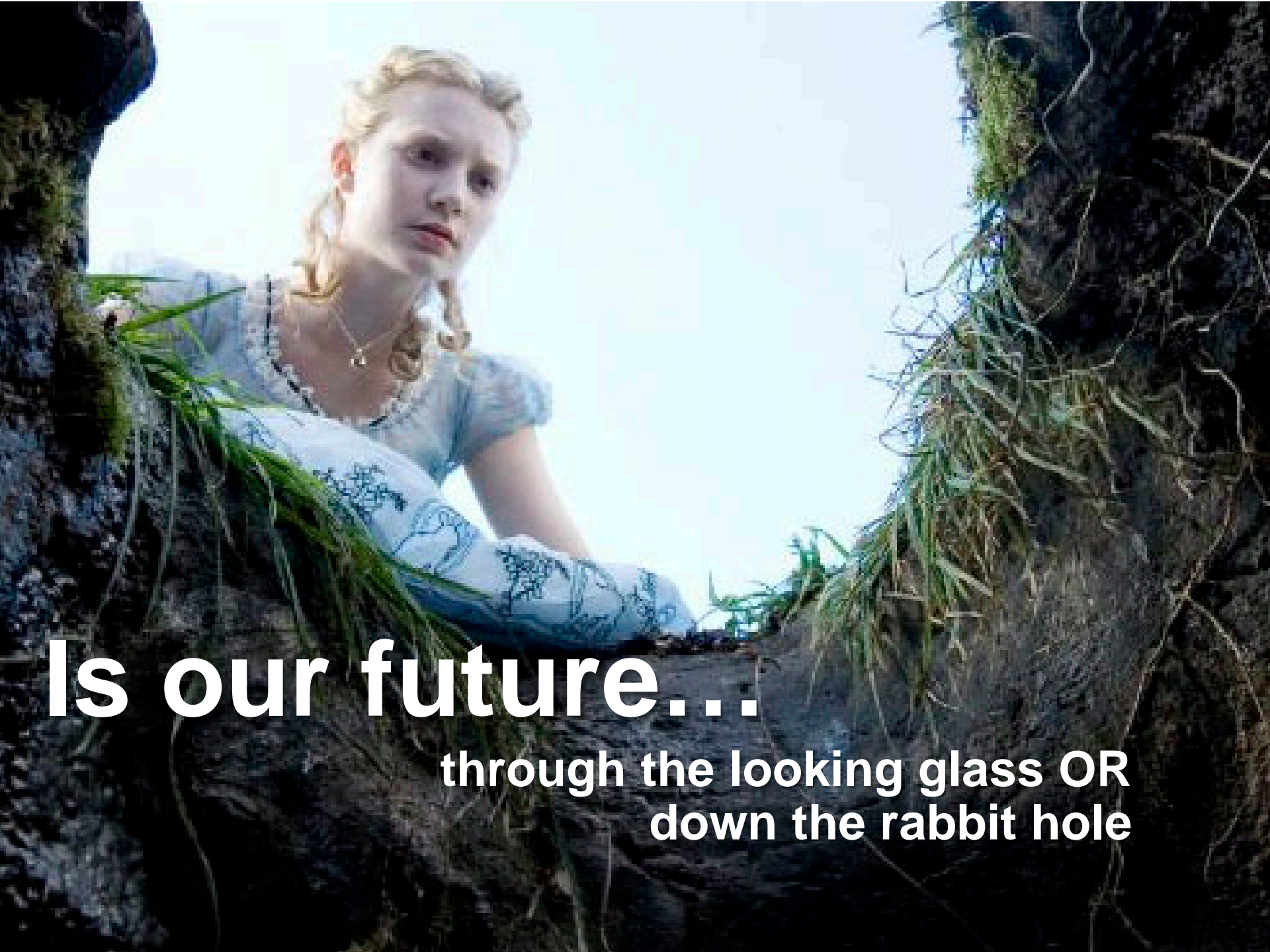
What regulators *really* think of environmental practitioners – and why it matters

**Biography**

Omar is the Director Regulatory Performance with the Queensland Government's Department of Environment and Heritage Protection. Omar's unit is responsible for supporting the implementation of the department's regulatory strategy and finding innovative solutions to regulatory challenges, as well as doing a range of other regulatory and customer service functions. Before joining the then-Environmental Protection Agency as an investigator in 2007, Omar had practised for 8 years as a solicitor.

**Abstract**

Environmental regulatory schemes rely on competent, ethical environmental practitioners, and much of the economic activity in the environment sector is driven by regulatory pressures. Both regulators and practitioners work for the benefit of the natural world, and the relationship between the two is important. In his presentation Omar offers a regulator's perspective on this relationship, and shares some future directions at both the Queensland and national levels.



**Is our future...**

**through the looking glass OR  
down the rabbit hole**

# KARAOKE TIME





What regulators *really*  
think of environmental  
practitioners  
...and why it matters

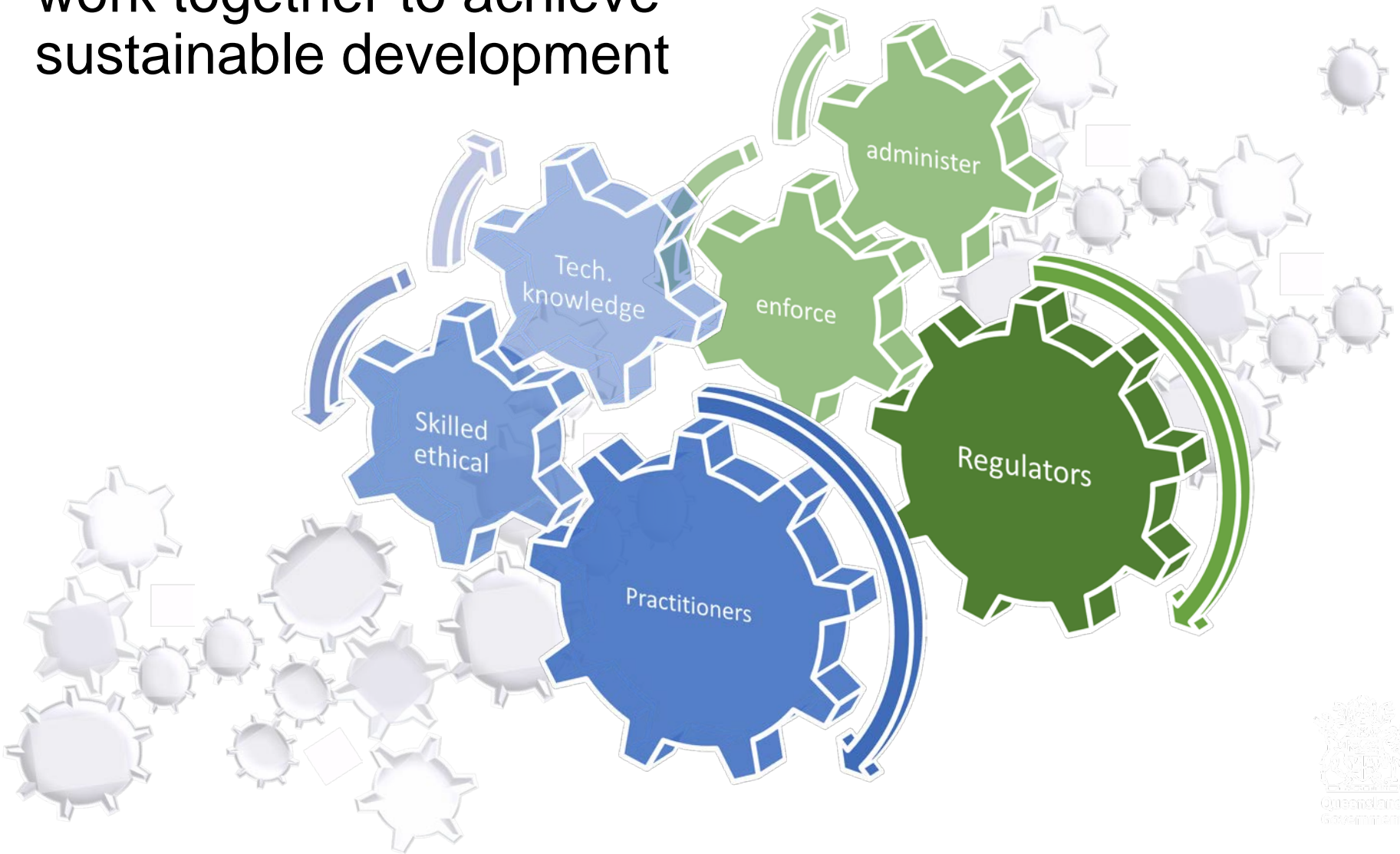
What comes to mind when you hear



send us your thoughts

# Our relationship

work together to achieve  
sustainable development





**A** practitioners translate requirements **B**  
into practical solutions

---







regulator talk...

BLAH

BLAH

BLAH

BLAH

BLAH

BLAH

BLAH





**Regulator**

What did you say about us?

A word cloud featuring various terms in different colors and sizes. The most prominent words are 'Green Cop' in large blue font, 'Government' in large red font, and 'Delay' in large light green font. Other significant words include 'Business Drivers' in red, 'Painful' in dark blue, 'Risk Adverse' in black, and 'Essential' in yellow. Smaller words include 'Over worked' (green), 'Fine' (orange), 'Police' (blue), 'Rules' (yellow), 'Permit' (orange), 'Stifles initiative' (yellow), 'Friend' (red), 'Important' (green), and 'Control' (blue). The words are scattered across the white background, with some overlapping.

Fine Essential  
Over worked Business Drivers Delay  
Risk Adverse Police  
Rules Painful Permit  
Green Cop Stifles initiative Government  
Friend Important Control



# innovation

clear expectations

Streamline process

collaborations for certification



*“Would you tell me, please, which way I ought to go from here?”* said Alice

*“That depends a good deal on where you want to get to,”* said the Cat.

*“I don’t much care where—”*

*“Then it doesn’t matter which way you go,”*

*“—so long as I get SOMEWHERE,”*  
Alice added as an explanation.

*“Oh, you’re sure to do that,”* said the Cat,  
*“if you only walk long enough.”*

*Alice in Wonderland adventures*



# thanks from EHP

Find us on

 @QldEHP

 @QldEHP

[www.ehp.qld.gov.au](http://www.ehp.qld.gov.au)