



# EIA Practitioner Perspectives

Philip Heath  
Principal, Sinclair Knight Merz

Tips and Tricks – Best Practice in  
Environment Effects Statements  
EIANZ/ NELA/ PIA Seminar  
November 2011

SINCLAIR KNIGHT MERZ

**SKM**

# What makes a successful EES?

Statutory requirements complied with

On time and budget

Stakeholder engagement

Ministerial authorisation to exhibit

Technically sound EES

Smooth progression to Inquiry

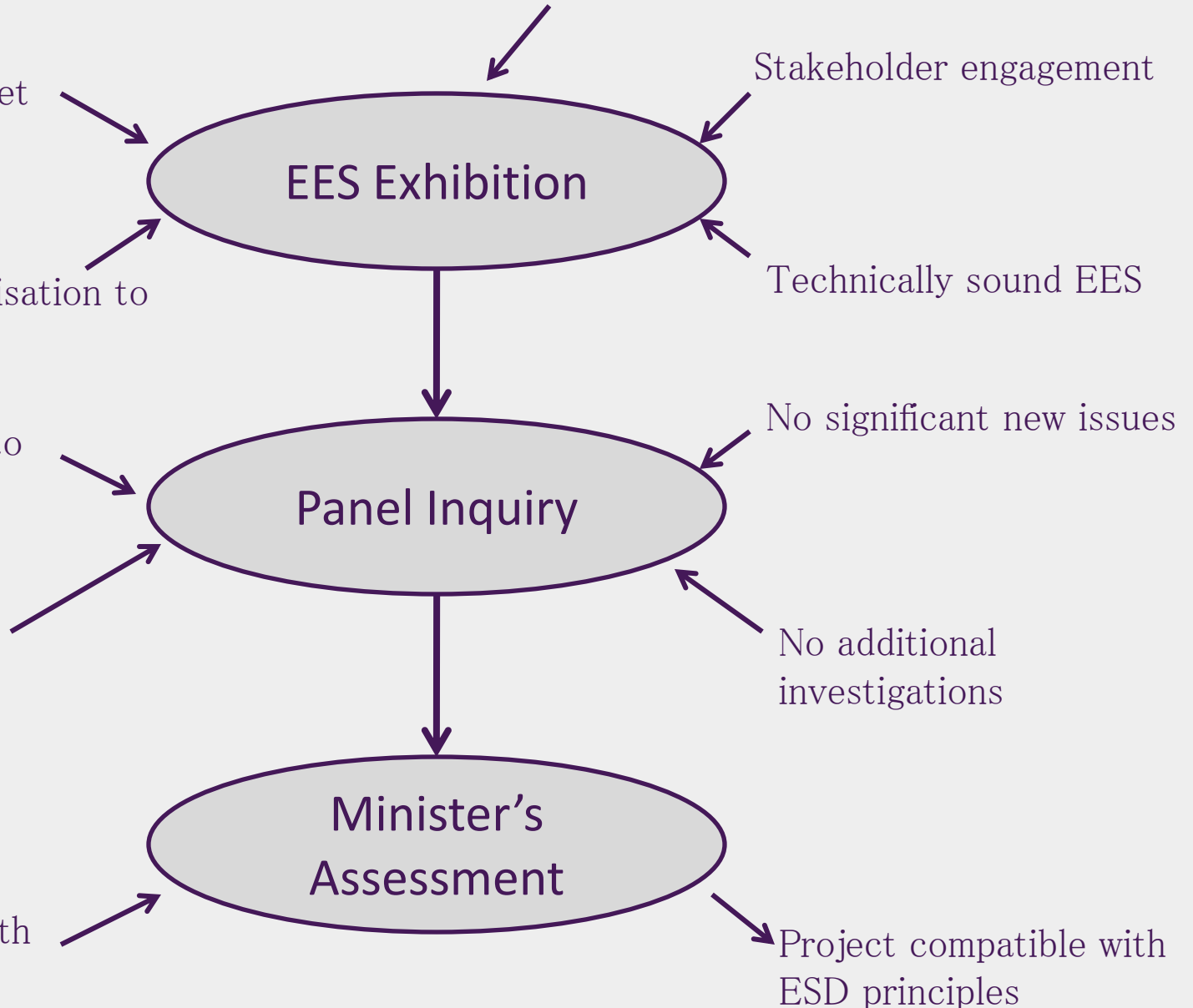
No significant new issues

No methodology disagreements

No additional investigations

Timely approval with limited additional conditions

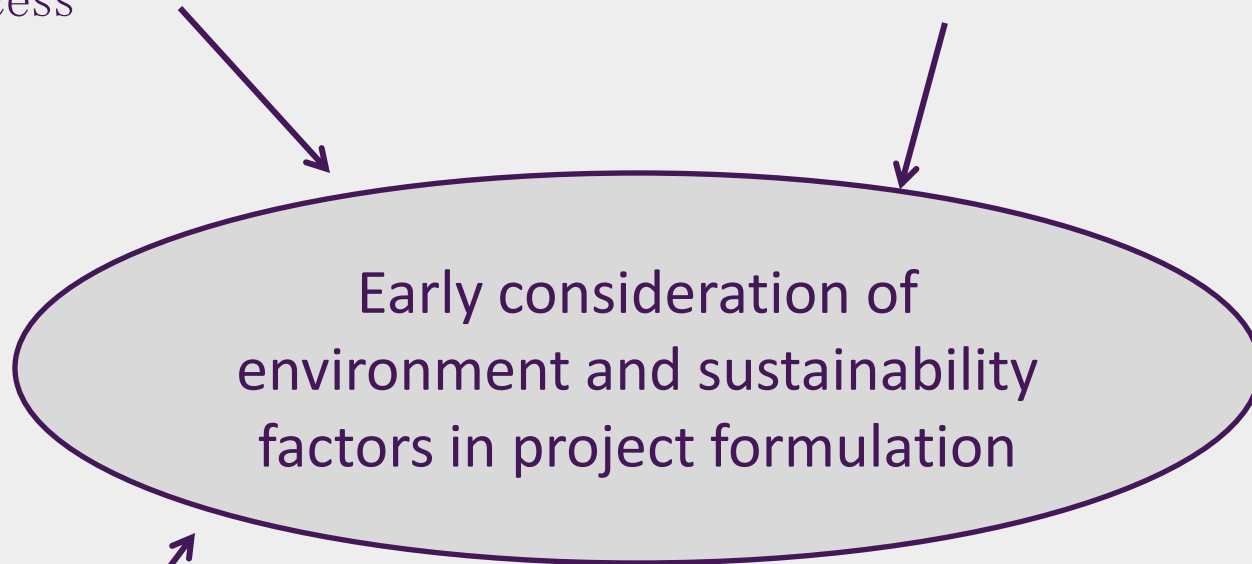
Project compatible with ESD principles



# Project Formulation Phase

Early commencement of EIA process

Determine EIA boundaries and approach to project formulation



Systematic and transparent consideration of alternatives

Demonstrated project rationale

SINCLAIR KNIGHT MERZ

**SKM**

## Project Formulation Phase

### EES

### Use of EES process

Scoresby Transport Corridor EES

✓

Mt. Stirling Alpine Resort EES

✓

Apollo Bay Wastewater Strategy EES

✓

Minerva Offshore Gas Field EES

✓

Portland Wind Energy Project EES

✓

Victorian Desalination Plant EES

×

Sugarloaf Pipeline EIA

×

SINCLAIR KNIGHT MERZ

**SKM**

Department of Infrastructure  
Office of Planning and Heritage  
May 1996

**Mount Stirling**  
**Environment Effects Statement**  
TECHNICAL APPENDICES  
VOLUME 1



**SINCLAIR KNIGHT MERZ**

Sinclair Knight Merz Pty Ltd  
ACN 001 024 095  
590 Orrong Road  
Armadale Vic 3143  
Telephone: 9248 3100  
Facsimile: 9248 3440



Department of  
Planning and  
Development  
Government  
of Victoria

PO Box 2240T  
Melbourne  
Victoria 3001

SINCLAIR KNIGHT MERZ

**SKM**



COLAC REGION WATER

**APOLLO BAY  
WASTEWATER TREATMENT  
PLANT  
ENVIRONMENT EFFECTS  
STATEMENT**

**Volume 1**



April 1995

**SINCLAIR KNIGHT MERZ**

SINCLAIR KNIGHT MERZ

**SKM**

# Portland Wind Energy Project EES

Portland Wind Energy Project  
Environment Effects Statement  
and Planning Report

## Vol.1 Main Document



SINCLAIR KNIGHT MERZ



Victorian Desalination Plant EES

Department of  
Sustainability and  
Environment

# Synthesis of environmental effects

Victorian Desalination Project  
Environment Effects Statement Volume 1



A Victorian Government project



SINCLAIR KNIGHT MERZ

**SKM**



## Pre-EES Phase

Desk-top scoping studies

Early engagement with authorities



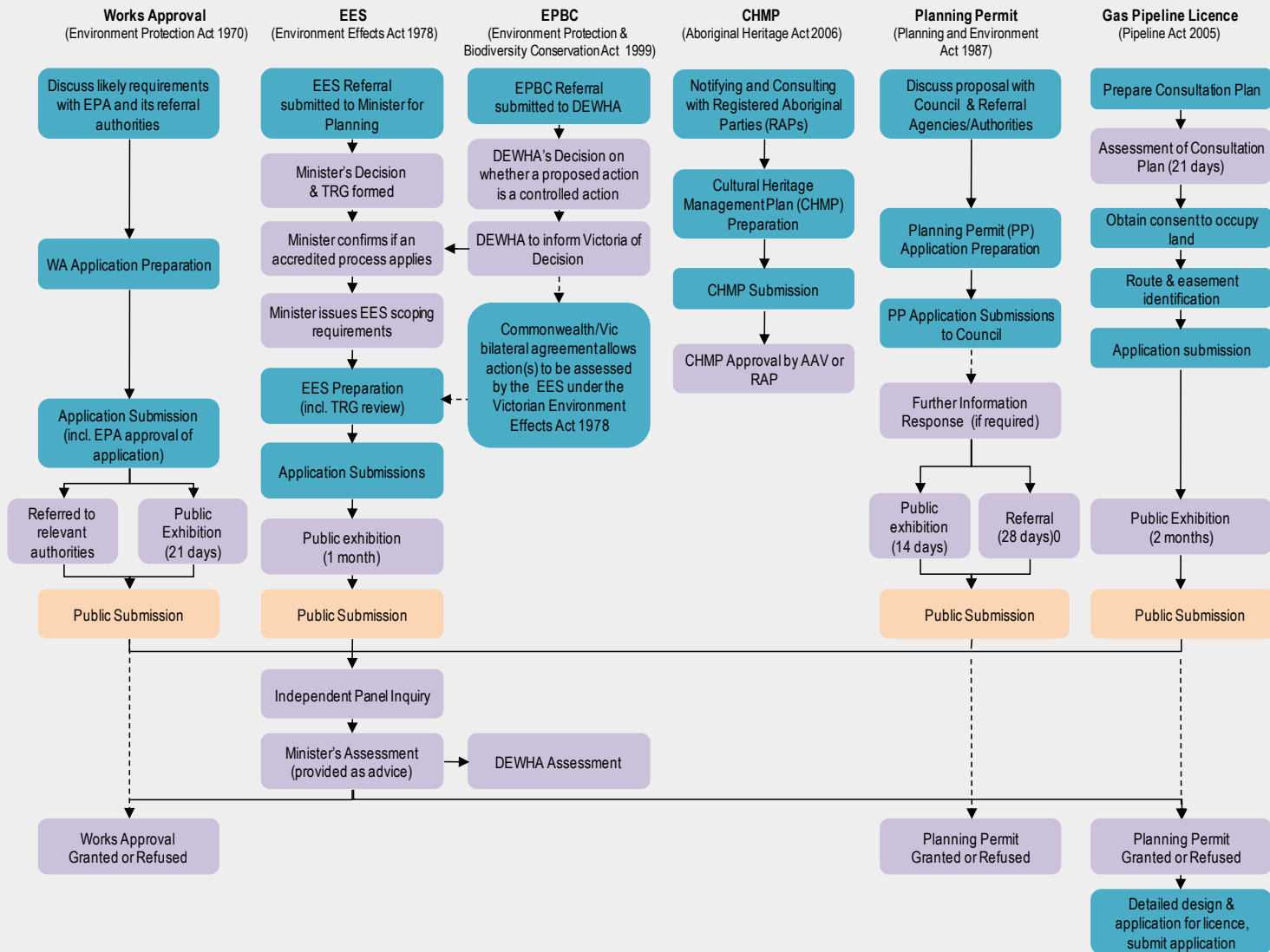
Stakeholder analysis

Coordination of all required approvals

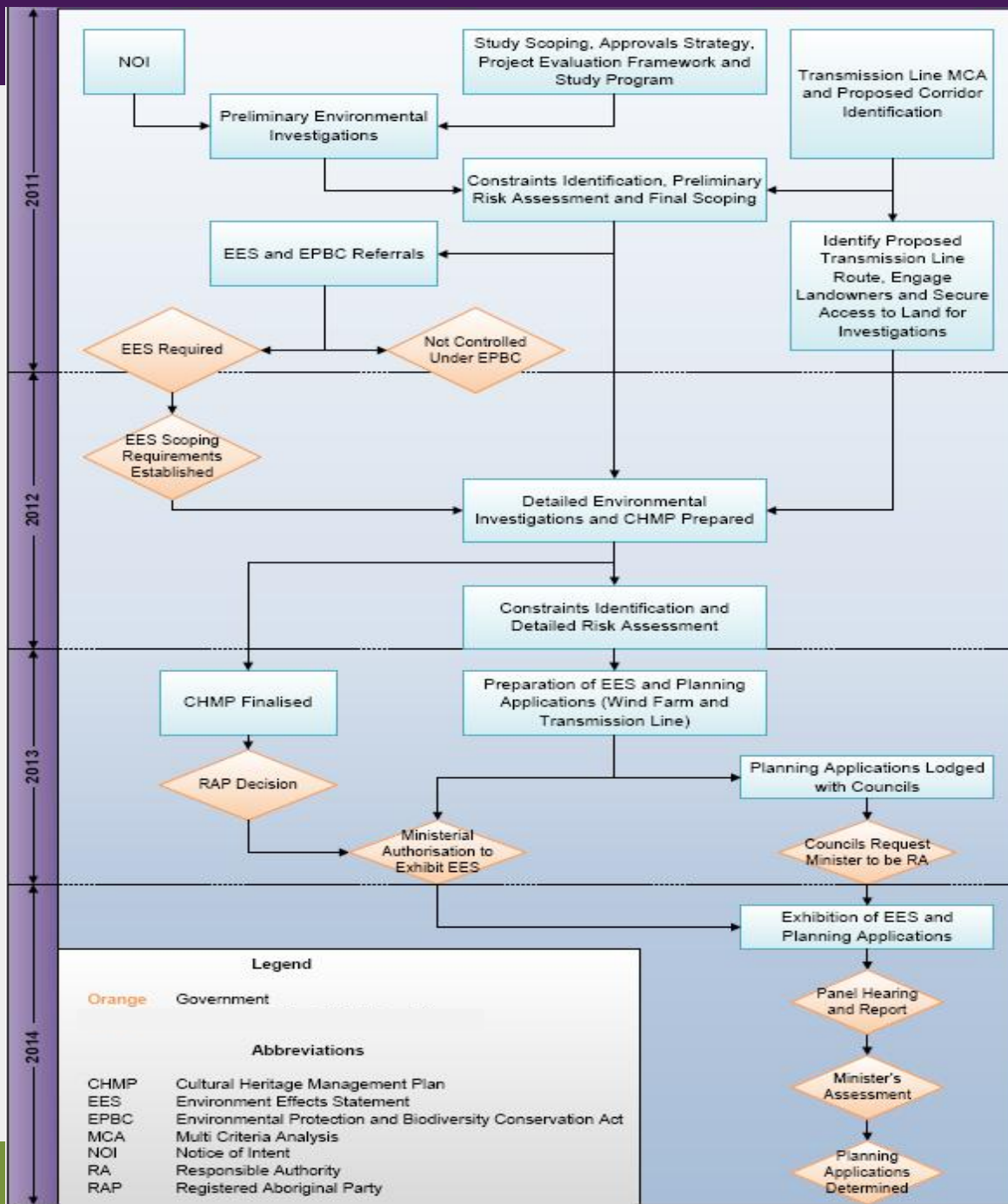
SINCLAIR KNIGHT MERZ

**SKM**

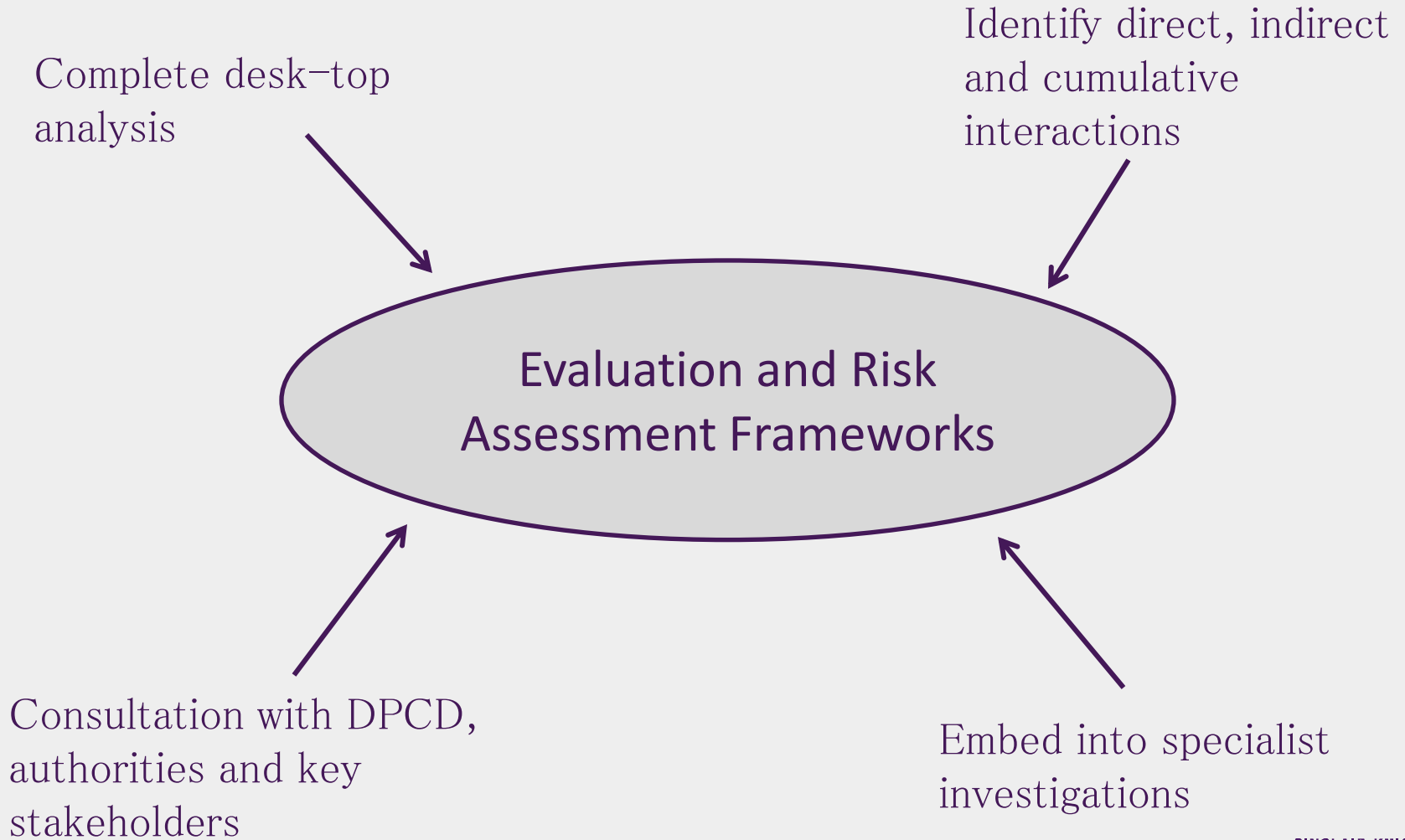
# Planning Approvals Strategy



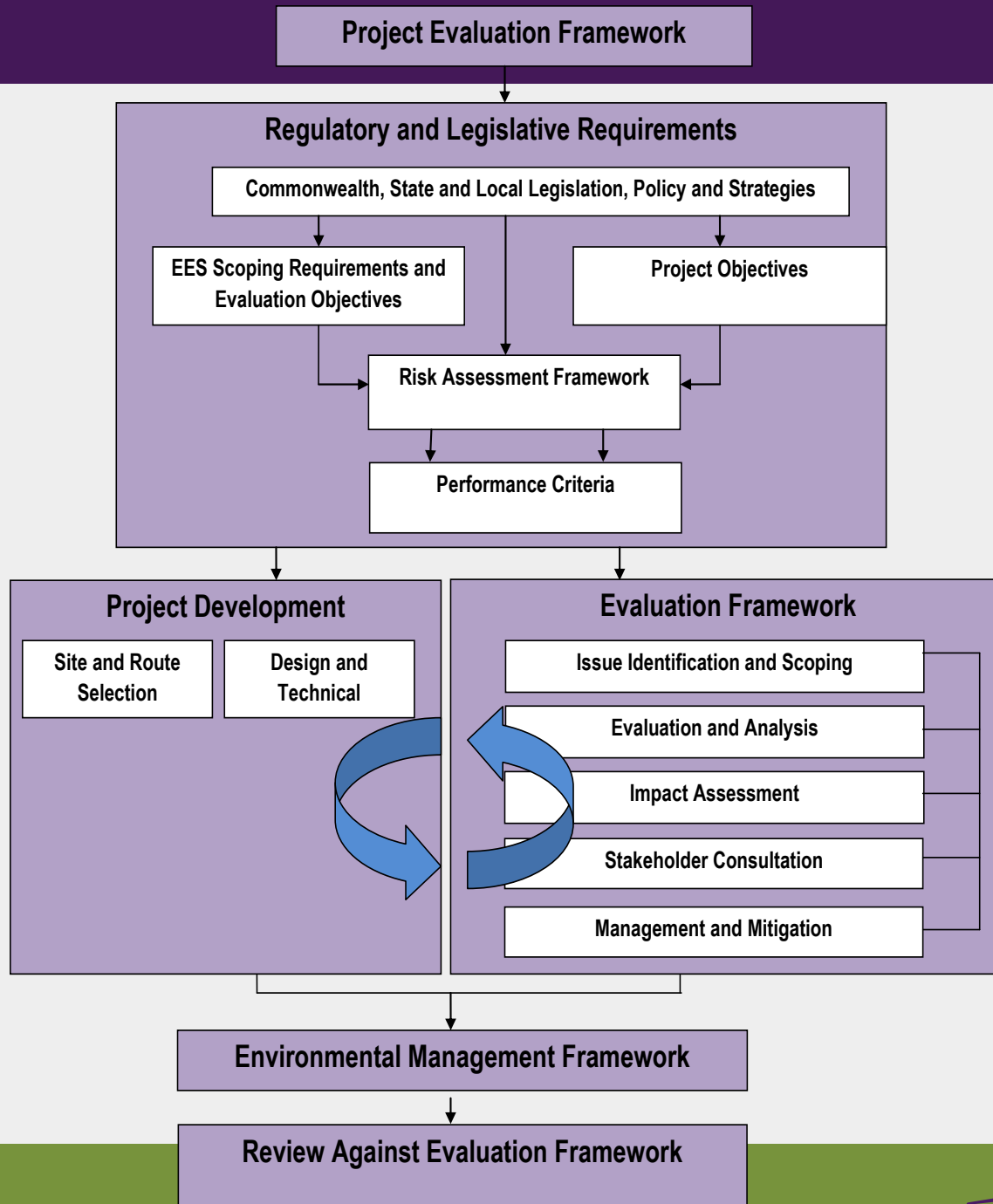
# Planning Approvals Strategy



# Scoping and Initiation Phase



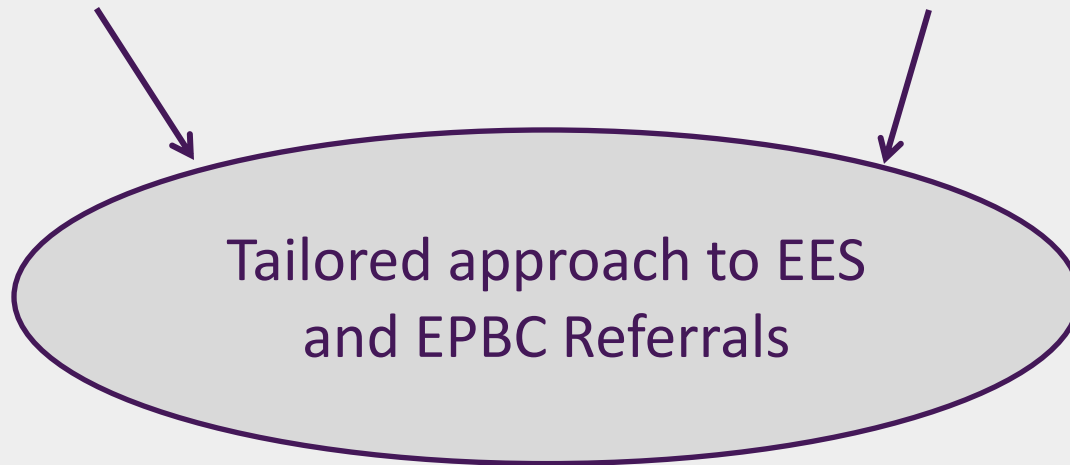
Project Evaluation Framework



# EES and EPBC Referrals

Level of investigation determined by  
Planning Approvals Strategy

Progressive consultation with  
DPCD and DSEWPaC



Tailored approach to EES  
and EPBC Referrals

Early submission enables  
assessment process to be finalised

SINCLAIR KNIGHT MERZ

**SKM**

# Detailed EES Investigations Phase

Integrated study team – frameworks, templates, GIS

Regular communication – inter-dependencies, stakeholder issues



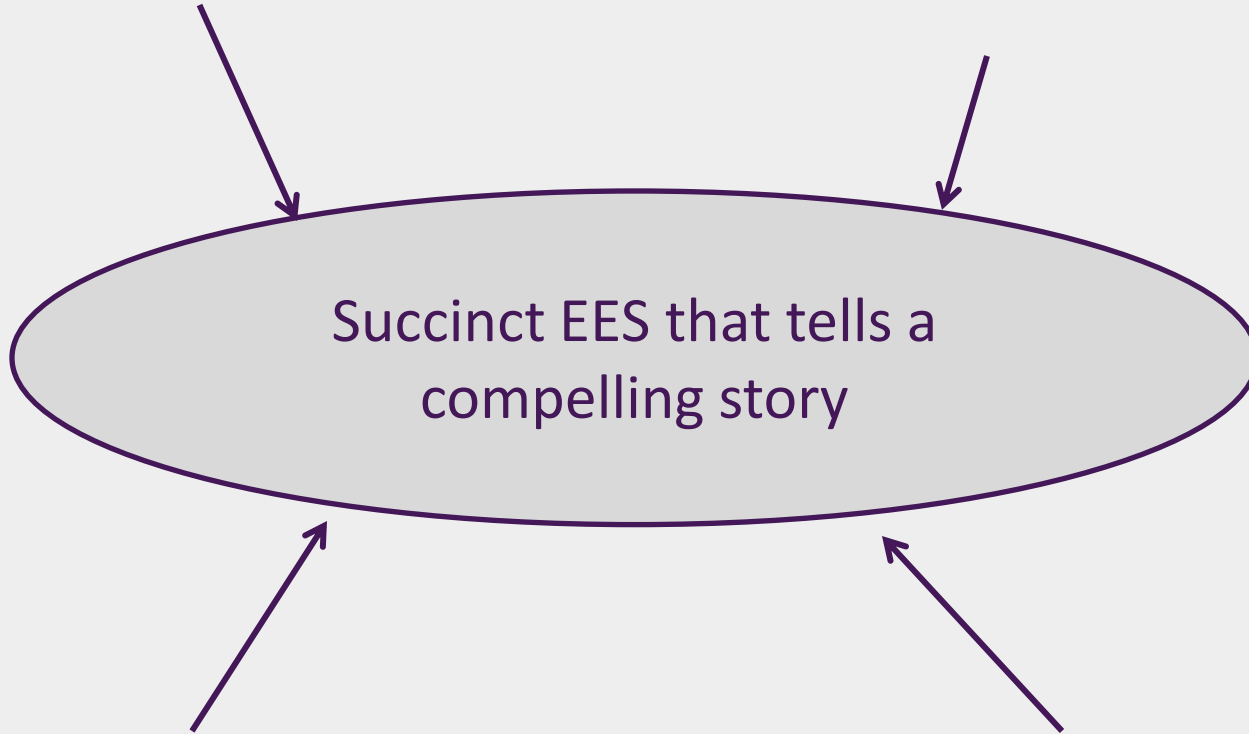
Maximise opportunities provided by TRG process

Peer Reviews

# EES Preparation Phase

Early agreement on EES structure

Progressive development of EES



Succinct EES that tells a compelling story

Integrated approach that draws diverse elements together

Regular liaison with DPCD

SINCLAIR KNIGHT MERZ

**SKM**





## Concluding Comments

- 7 Tips and 19 Tricks – just the start!
- Set-up phase is critically important
- Early consideration of environmental factors fundamental