



Strategic Environmental Assessment

Christine Wyatt | Global Market Leader Environment



Strategic environmental assessment (SEA)

- What is SEA?
- SEA vs EIA & international experience
- Melbourne Urban Growth Boundary – “growing pains”
- Desert sands in Doha – a moving target
- Other emerging approaches



What is SEA?

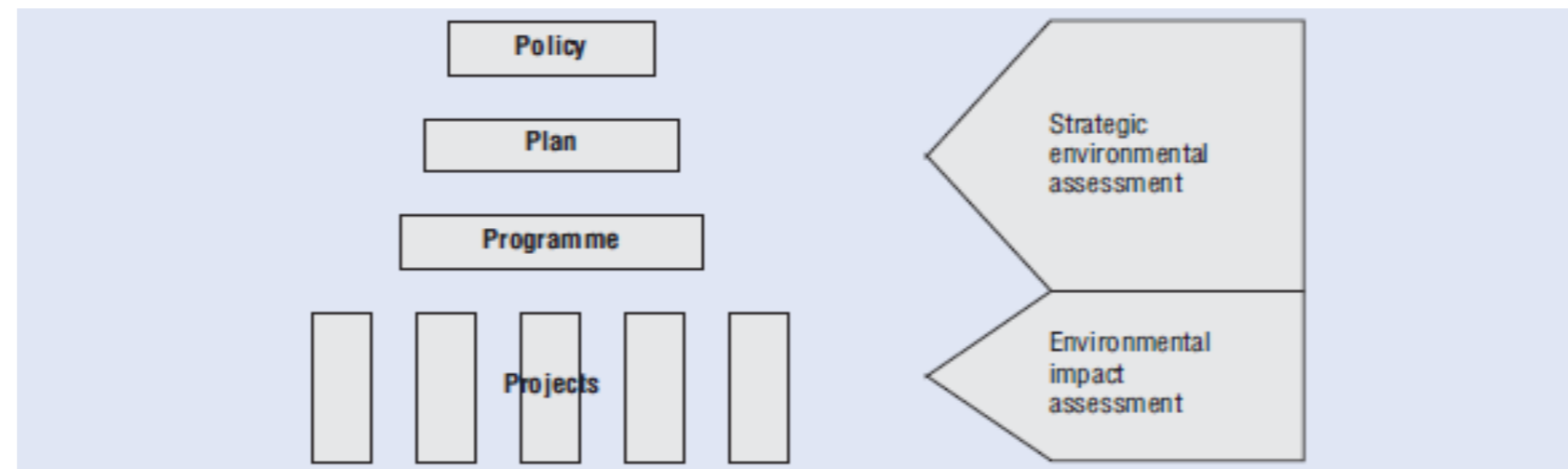
A system of incorporating environmental considerations into policies, plans, programmes and strategies

Tool or process for integrating environmental considerations along with social and economic considerations into policies, plans or programs

SEA purpose

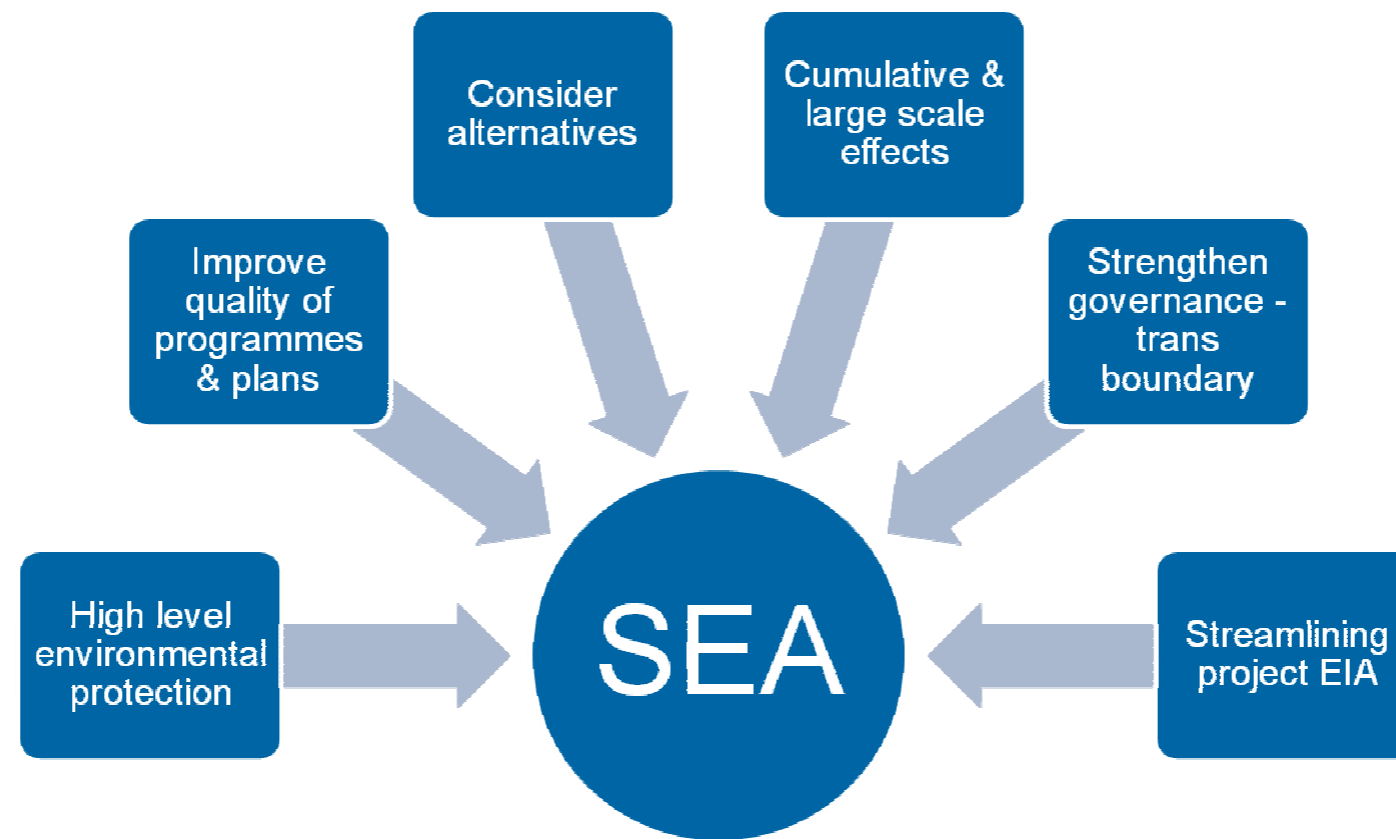
To ensure environmental considerations inform & are integrated into strategic decision-making in support of sound & sustainable development

(UNECE 2007)

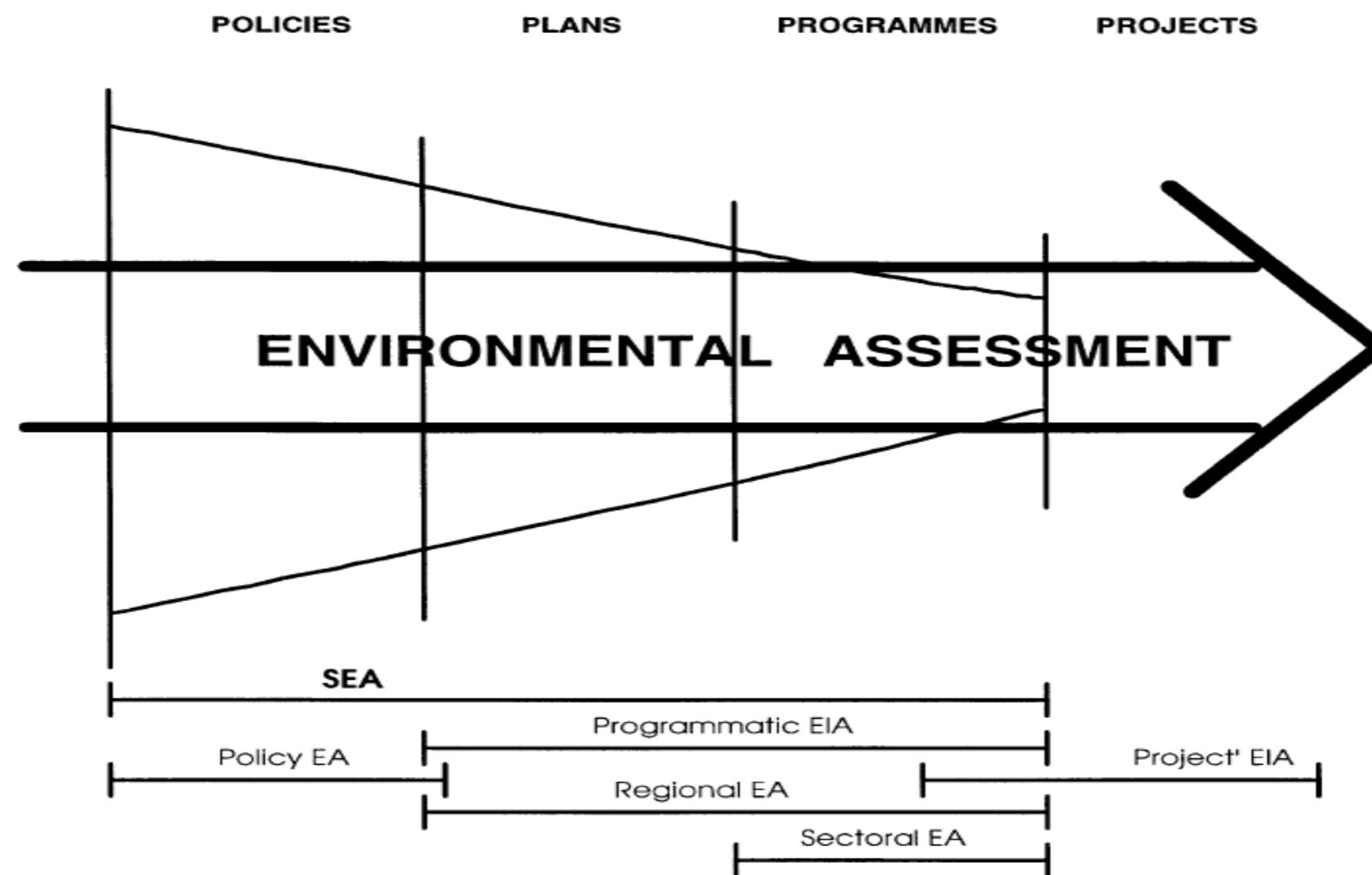


Strategic environmental assessment

Benefits of SEA?



Relationship between SEA & EIA



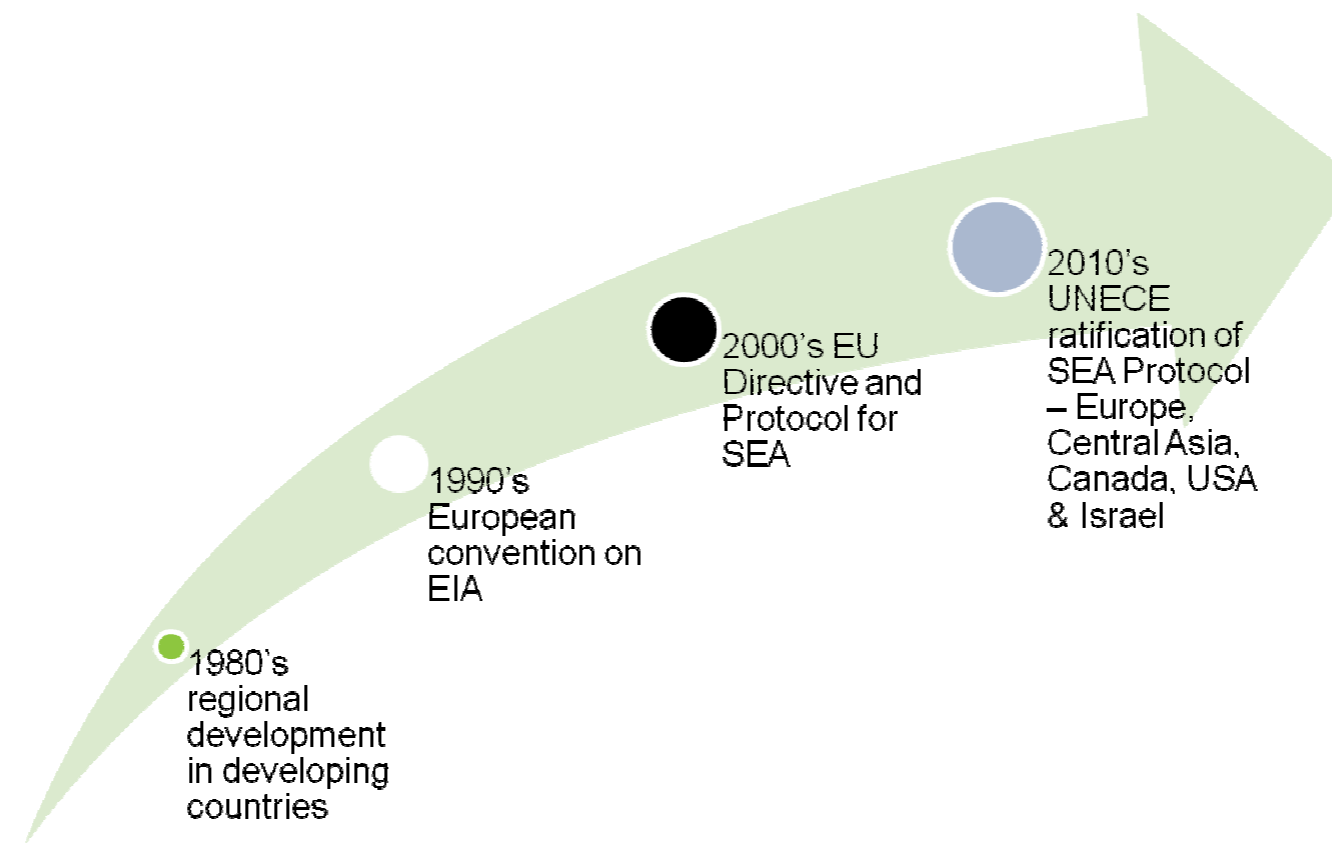
Strategic environmental assessment

SEA vs EIA

SEA		EIA
Policy/planning	Level of decision	Project
Fundamental framework	Objectives	Project focussed
Global, national or regional	Scale of impacts	Regional or local
Longer term planning	Time scale	Project life cycle
Strategic options	Alternatives	Alternatives within the project
Meeting objectives includes identifying macro-level development outcomes	Scope	Mitigating impacts includes some project opportunities = off-sets
Foundation element	Cumulative impacts	Limited review - not regional-scale developments or multiple projects
Decision on policy, plan and programme & implications for future implementation	Outcomes	Project permissions & mitigation opportunities



International experience



Melbourne Urban Growth Boundary SEA

EPBC approval of an **overall program** for urban development and major transport infrastructure

2 classes of actions – approved until **2060**

- Regional Rail Link Project
- 28 urban development precincts – aligning with Precinct Structure Plan process



Melbourne Urban Growth Boundary SEA

- Strategic biodiversity conservation rather than project patchwork with smaller gains
- More cost effective and efficient – early assessment coordinated by State on a large scale
- Coordinated offsetting process
- Implementation of investigations beyond the capability of a project
- Long term planning for infrastructure as opposed to a haphazard response to development pressure
- Join up Commonwealth and state approval processes providing greater certainty for developers



Melbourne Urban Growth Boundary SEA

SEA “growth pains”

- Governance structure – how to implement the approved actions
- Responsibility and accountability?
- SEA into Planning world
 - Precinct Structure Plans
 - Translation/interpretation of prescriptions
- Role of the Biodiversity Strategy and Regional Strategy Plans & coordination with Growth Area Plans
- How to cope with changing circumstances over time



Qatar National Master Plan SEA

Qatar National Vision 2030, National Development Strategy & Millennium Development goals



Ministry of Municipality and Urban Planning developing the Qatar National Master Plan:

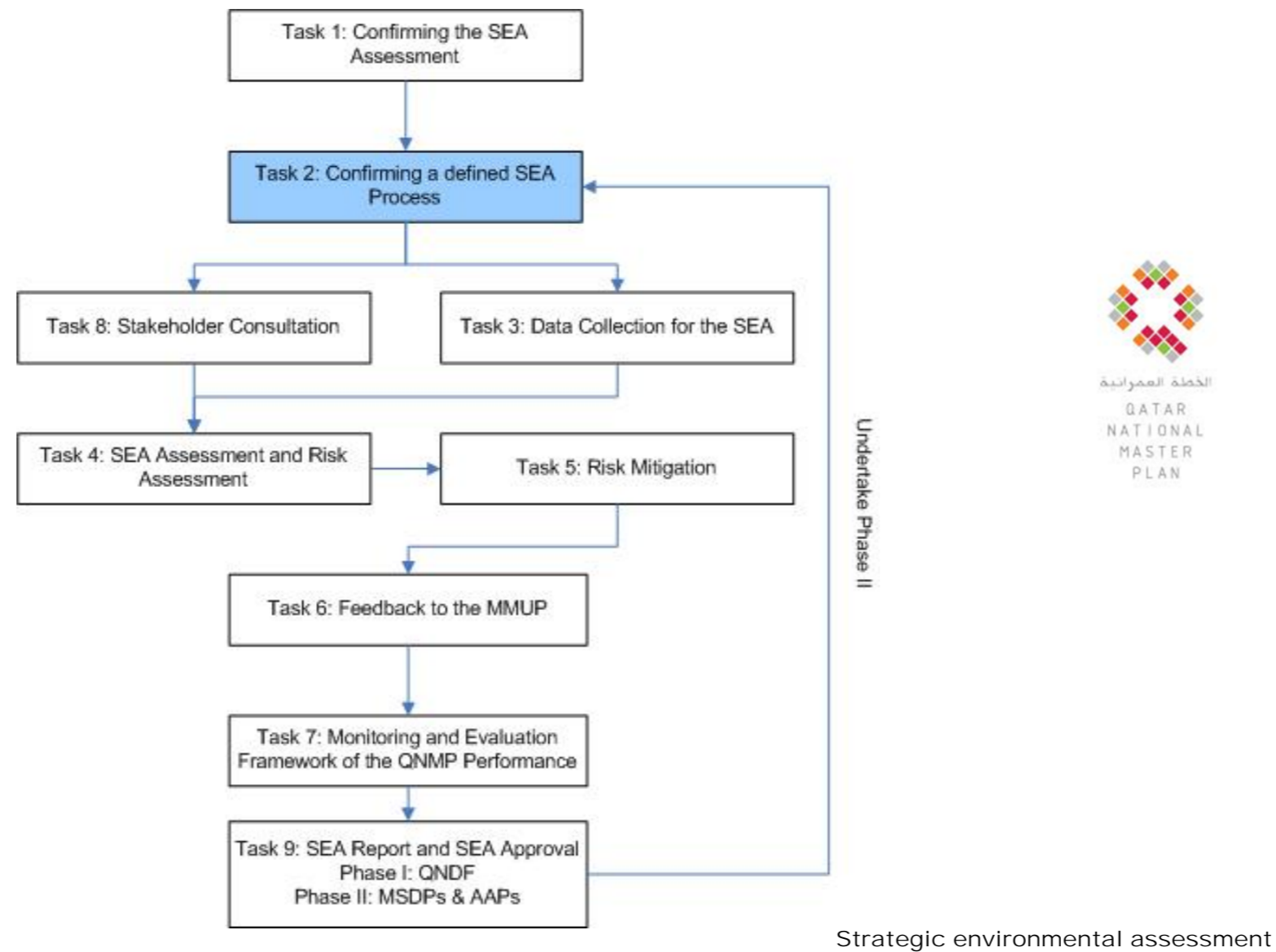
- Qatar National Development Framework
- 7 Municipal Special Distribution Plans
- 10 Area Action Plans



SEA



Qatar National Master Plan SEA



Qatar National Master Plan SEA

Risk management responses:

- Sustainability Assessment tool
- Strategy for reducing GHG emissions
- National GHG Emission Reporting System
- National Environment Management Plan
- Integrated Coastal Zone Management Plan
- National Biodiversity Management Plan
- Solid Waste Management Plan
- Integrating SEA into the planning process



Strategic environmental assessment

Emerging approaches

SEA to sustainability frameworks

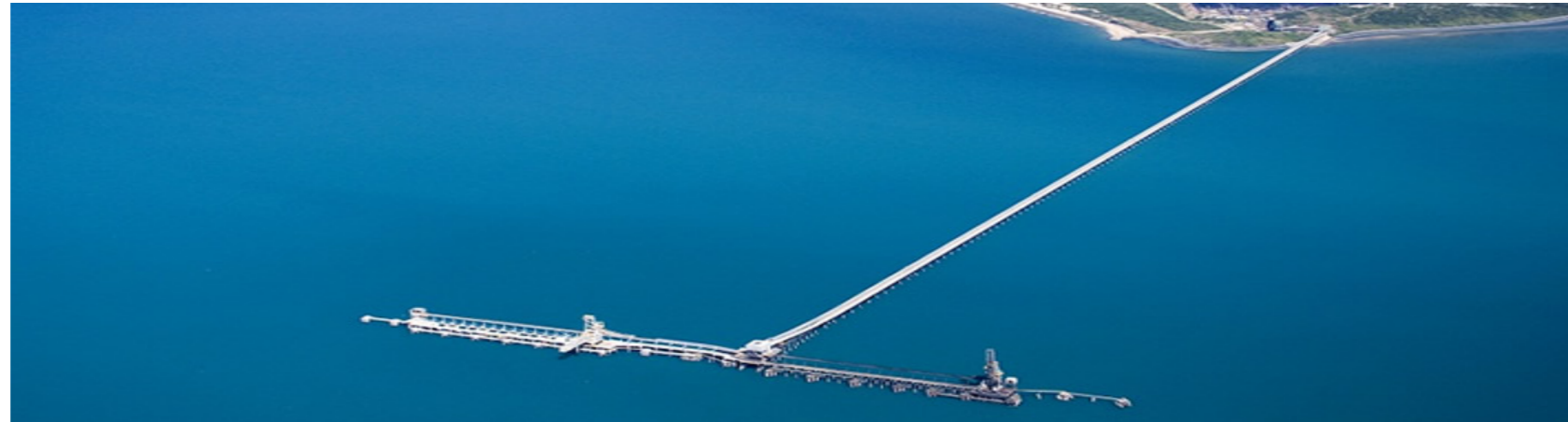
Cumulative impact assessment frameworks

Port of Point Abbot, Bowen
North Queensland



Cumulative impact assessment – Port of Abbot Point

- Preferred port for development of the coal export industry
- Environmental best practice and consider values of the Great Barrier Reef World Heritage Area.



Cumulative impact assessment – Port of Abbot Point

- Informs assessment of different projects under national and state environmental law
- Feeds into the Federal and Queensland SEAs on future development in or near the Great Barrier Reef World Heritage Area
- Four proponents – joining to produce a common assessment report
- Sharing responsibility for studies/data sharing/process



 ### | HANCOCK COAL INFRASTRUCTURE PTY LTD



SEA/EIA/CIA - Its all about the
precautionary principle and
intergenerational equity





www.ghd.com