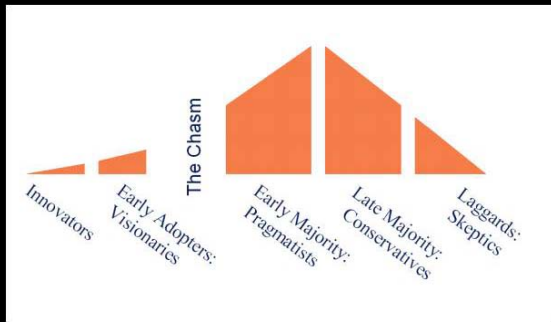
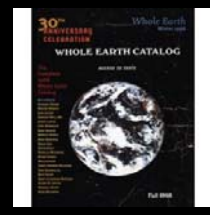


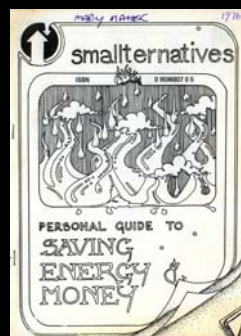
We are part of a social change process



Environmental movement in 1970s
– limits to growth, population bomb, DDT, coal strikes, oil crisis, greenhouse, conservation, pollution legislation.....



1976 Brisbane...Smallalternatives energy campaign



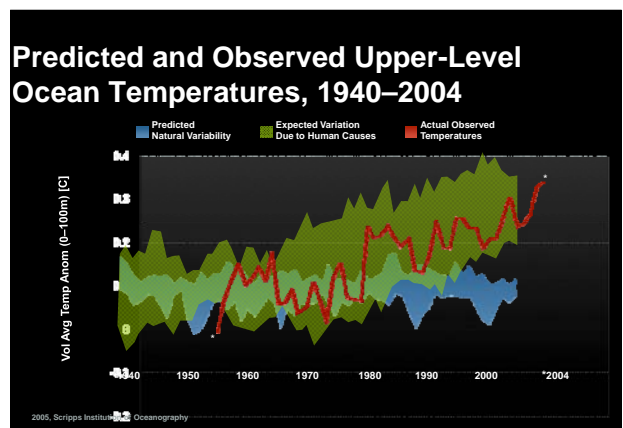
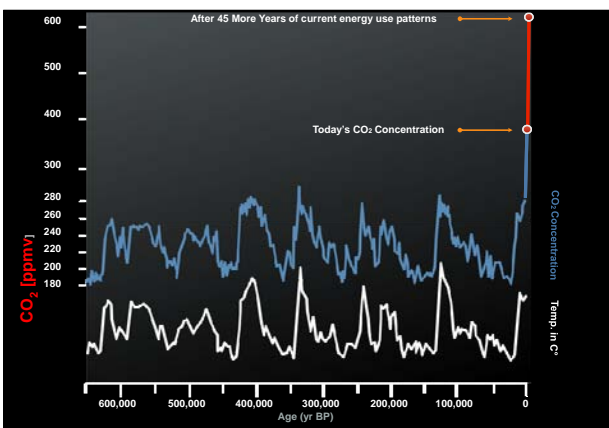
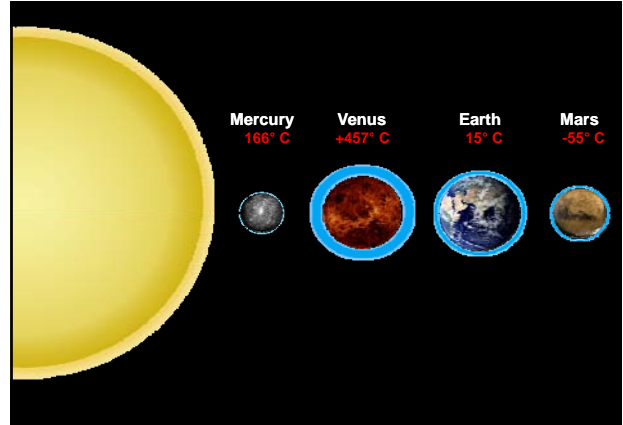
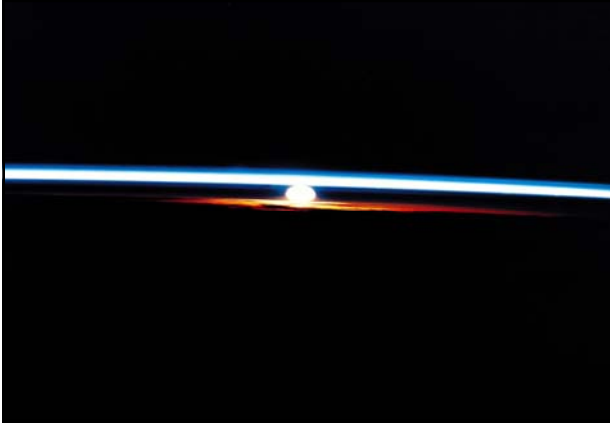
CLIMATE CHANGE

COMPELLING REASONS FOR RE-TOOLING AUSTRALIA in 2008



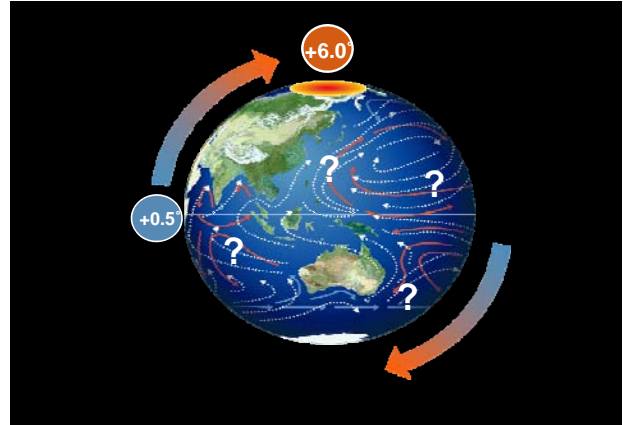
Assisted for a new generation from the New York Times Bestseller
an inconvenient truth
the crisis of global warming

AL GORE



HOW THE CLIMATE WORKS

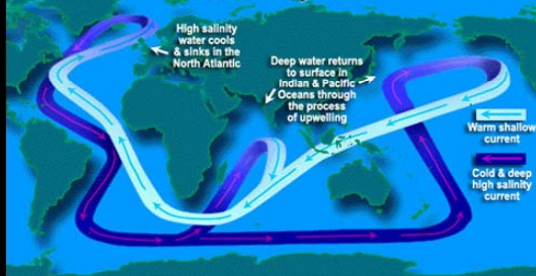
An increase of **2.5°C** in the global average actually means an increase of...



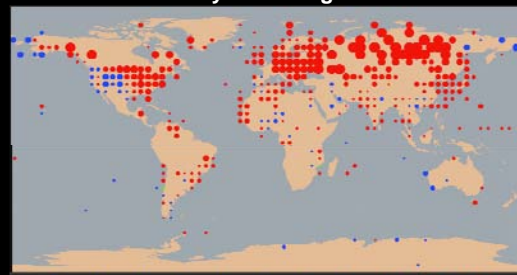
Currents and climate

<http://science.hq.nasa.gov/oceans/images/CONVEYOR.jpg>

Generalized model of thermohaline circulation: "Global Conveyor Belt"

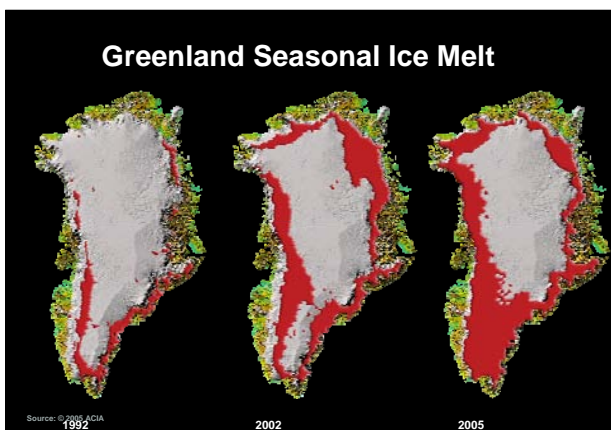
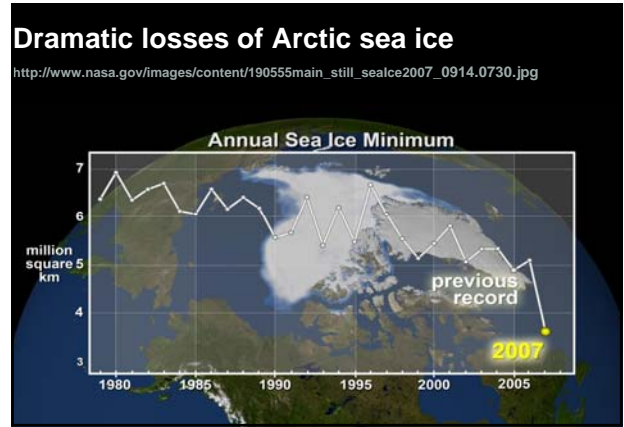
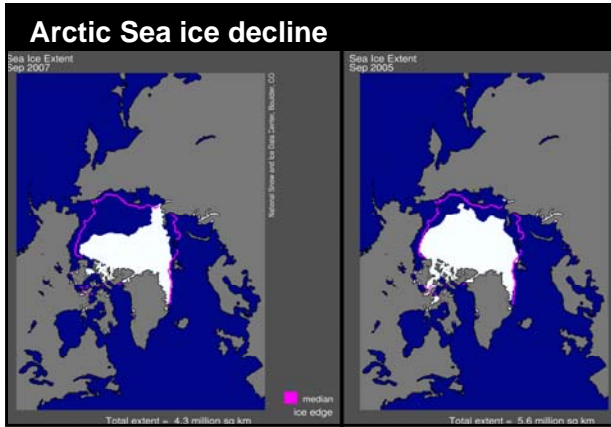


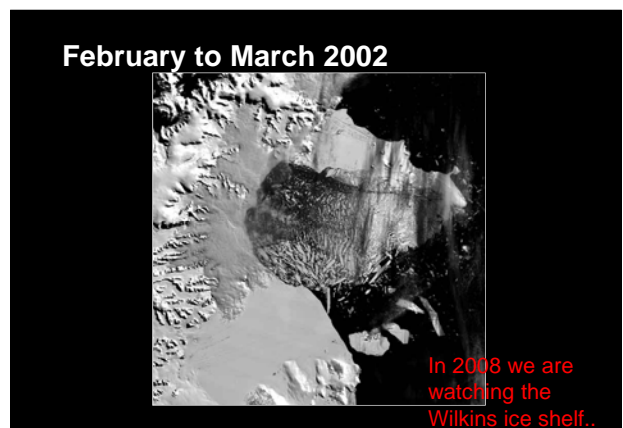
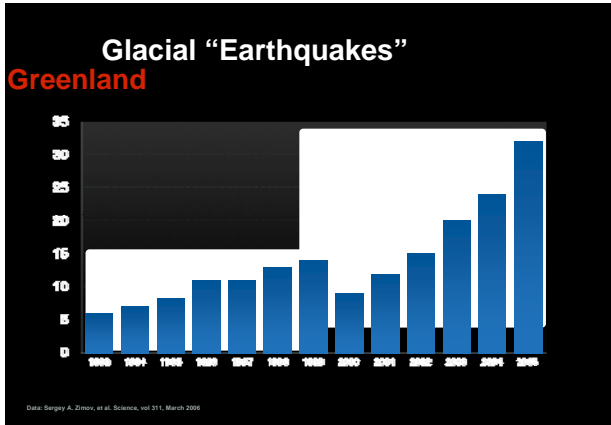
Global surface temperature variation from 1961-1990 30 year average



January 2007 was hottest January on record

SOURCE: US National Oceanic and Atmospheric Administration: National Climate Data Center, Asheville, N.C., 15 Feb. 2007





**UNCERTAINTIES OF SYSTEMS
INTERACTIONS,
IRREVERSIBILITY, CHANCES OF
CATASTROPHIC CHANGES**

And what happens if:

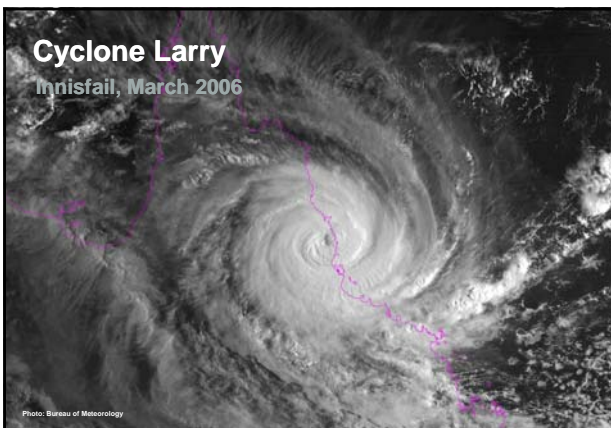
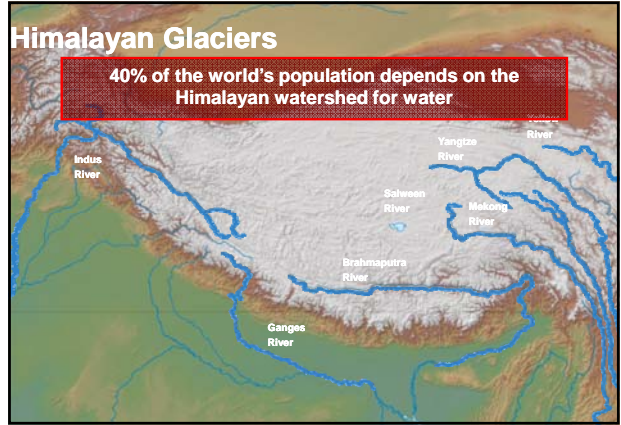
- Earth's carbon absorption rates are halved as forests disappear, oceans are acidified
- More rapid melting of polar regions ?
- Permafrost melts and releases stored methane (24 times more potent than CO₂)
- Melting ice in Arctic leads to high solar absorption

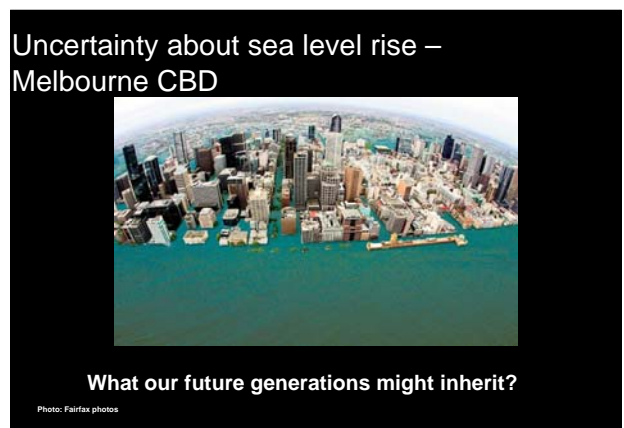
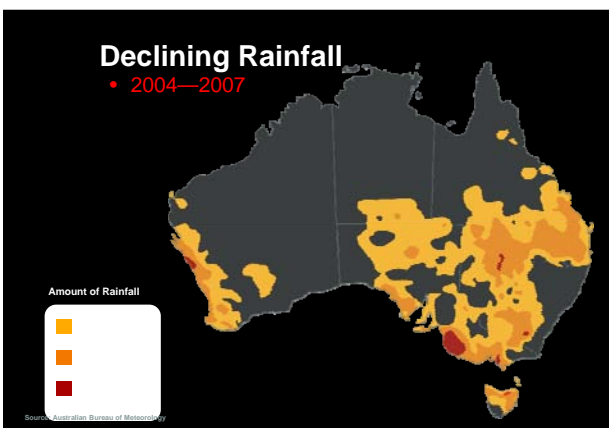
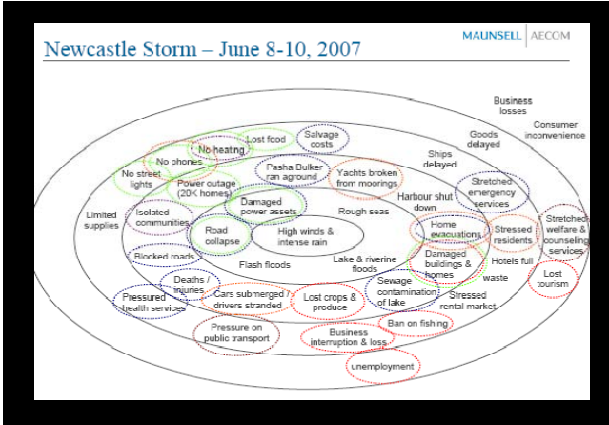
The Australian 15 April 08

Nicholas Stern says he **underestimated the threat** from global warming in 2006.

Emissions are growing much faster than we thought, the absorptive capacity of the planet is less than we'd thought, the risks of greenhouse gasses are potentially bigger than more cautious estimates and the speed of climate change seems to be faster.

Impacts of climate change – a very brief snapshot





RE-TOOLING - FOUR FRONTIERS FOR ACTION

