



# Practical aspects of implementing the SEQ NRM Plan

**Simon Warner**



## **Implementation of the Plan**

- **What SEQ Catchments is doing**
- **Engagement of other Stakeholders**
- **Economics of NRM**
- **Opportunities to support the delivery on the Plan**
- **Issues**

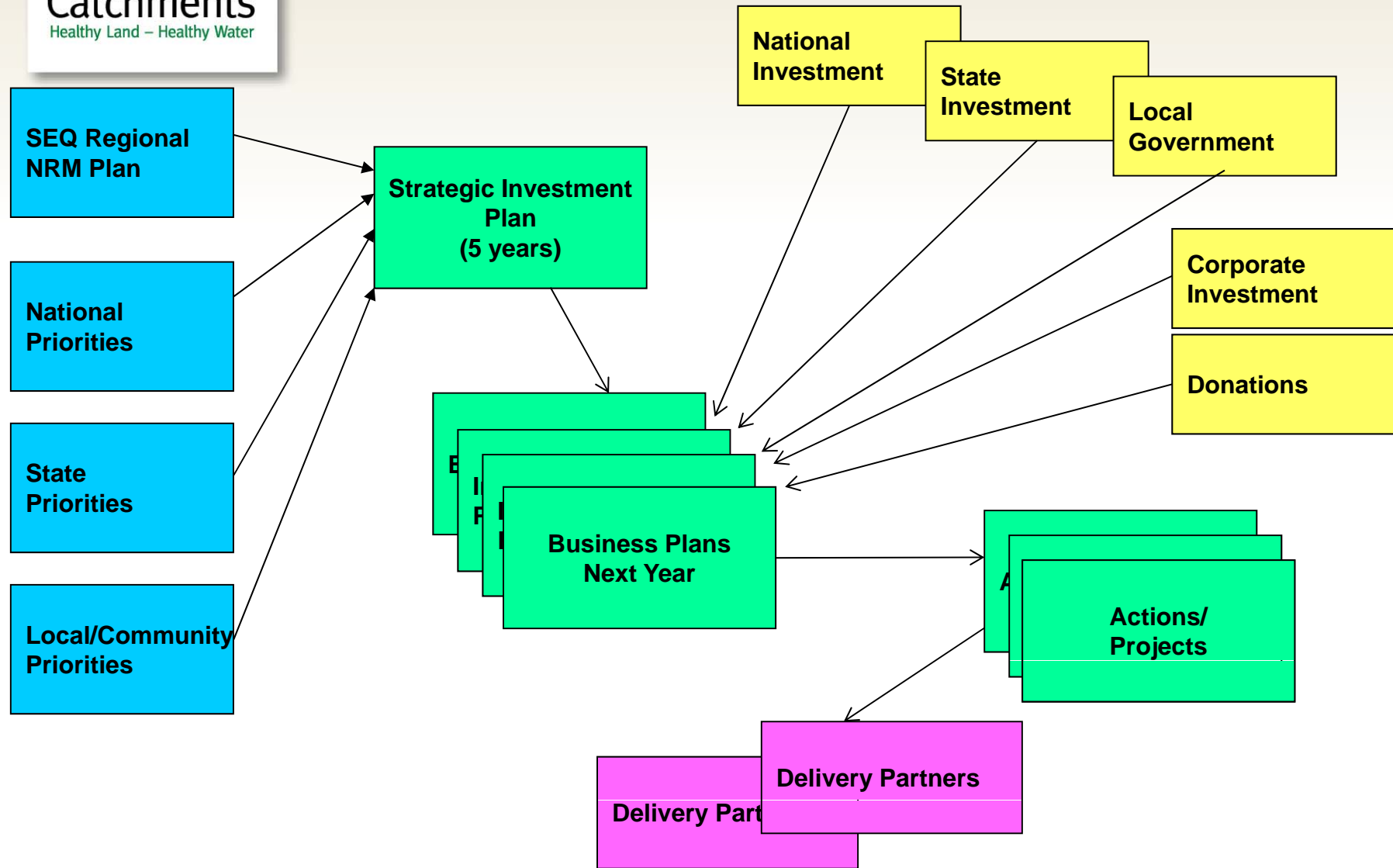


# What SEQ Catchments is doing

- **Strategic Investment Plan**
- **Identification of key investment areas**
  - **Planning**
  - **Mapping**
  - **Future of our Bay, Beaches and Waterways**
- **Engagement with other Stakeholders**
  - **Landholders and local community groups**
  - **CEO's Committee**
  - **Local Government**
  - **Science and technical**
  - **Corporate community**
- **Sourcing investment**



# SEQC Strategic Investment Program Priorities and Targets and Investment



# For example: Healthy Land program

Sustainable land-use in proximity to the population centre of SEQ to provide long term options for food supply, provision of ecosystem services and rural economic development.

Sub-program	Intermediate Targets	Projects/Activities
Sustainable Land Management	By 2014, a further 20,000ha of land is under recognised sustainable management practices, than in 2008	<ul style="list-style-type: none"> <li>Healthy Country Program (Qld Govt)</li> <li>Local level grants (sustainable agriculture) (C4oC SETRIS02)</li> <li>NE Downs Landcare - Improving carbon in soils (C4oC Open Grants)</li> <li>Sunshine Coast Canelands Pongamia (Maroochy Landcare-C4oC Open Grants)</li> <li>Embracing Partnerships (Toowoomba Landcare C4oC Open Grants)</li> <li>Supergraze (C4oC NLP Yr 1)</li> <li>Pineapple Sustainable Practices Project (C4oC NLP Yr 1)</li> <li>Powerlink Greenworks Program (Irbyana etc)</li> <li>Property management incentives (Seqwater mid Brisbane)</li> <li>Sustainable grazing program (Landcare Aust Woolworths)</li> </ul>
Supporting Agricultural Enterprises	By 2014, a further 400 agricultural enterprises will have improved knowledge and aspirations through training including PMP to better manage the balance between achieving economic and environmental goals, than in 2008	<ul style="list-style-type: none"> <li>Healthy Country Program (Qld Govt)</li> <li>Property Management Planning (PMP) and mapping support (C4oC SETRIS02)</li> <li>Property planning (Powerlink - PBMP)</li> <li>Mid Brisbane program (Seqwater mid Brisbane)</li> </ul>



# Planning

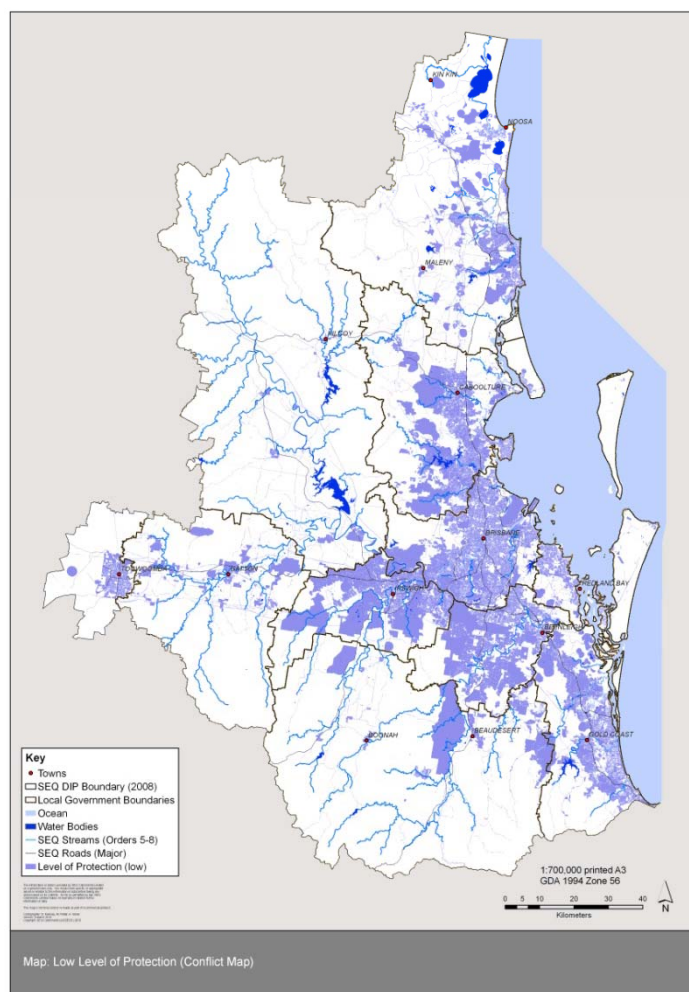
- Confirm regional priority areas for planning, actions and incentives.
- Formally protect using all available planning and policy options eg community plans, strategic frameworks, planning schemes and SEQ Regional Plan policies.

# Planning and Mapping

## Forward planning tool

Areas identified where there is a low level of protection for NRM assets covered by the Plan:

- Resolve planning conflicts
- Enhance management eg Flinders Karawatha Corridor.
- Identify activities requiring offset





## Planning

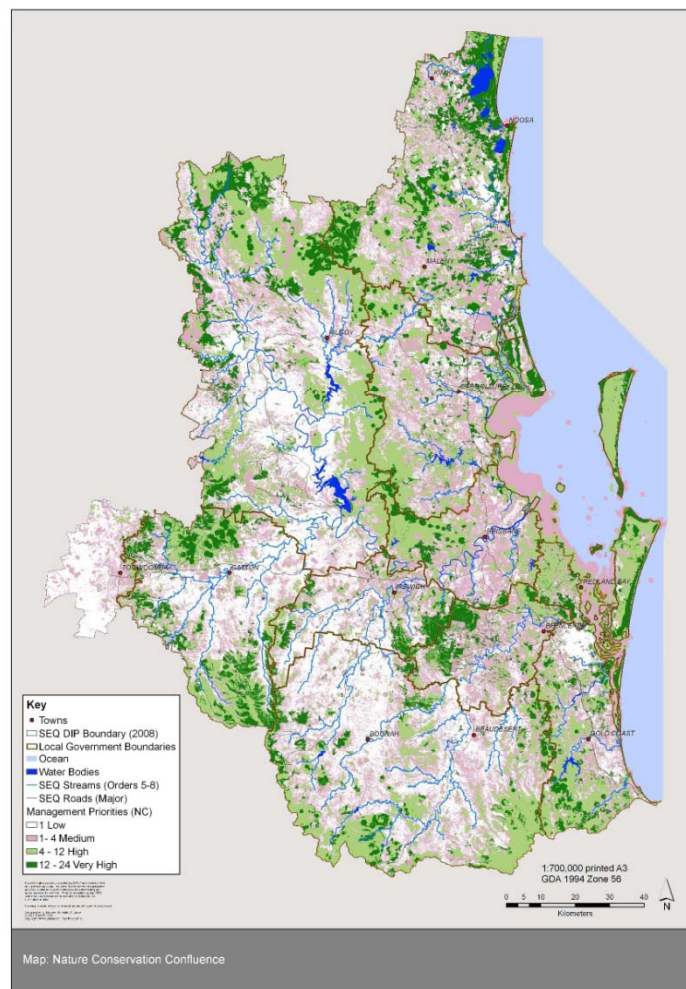
### **SEQ Natural Resource Management Regional Targets Atlas 2031:**

1. A **forward planning tool** e.g. to inform preparation of local government planning schemes and State Government policy, corporate plans, property plans and natural resource management programs;
2. A **decision making tool** for natural resource managers;
3. Monitoring and evaluation of resource conditions and trends; and
4. Identification of data compatibility and/or gaps.

# Planning Mapping

**Decision making tool  
for natural resource  
managers**

eg. Mapping of Nature  
Conservation Targets  
to focus activity in  
priority areas including  
buffering of assets.



# Planning and investment

## Connected Landscapes

- Priority Natural Infrastructure for liveability and economic prosperity.
- Action and investment in the next five years.
- Coupled with sub regional connectors reflecting local government and community priorities.
- eg. Flinders Karawatha Corridor





# Planning

## SEQ Ecosystem Services Framework

SEQ Regional Plan Policy:

- 4.3.1 - Protect areas supplying high levels of ecosystem services from development impacts

Guiding principle SEQ NRM Plan

Guideline available:

***A guide to incorporating the SEQ Ecosystem Services Framework in Local Government Planning and Policy***



# The roles of those involved in implementation

## Key Implementation Partners

- Australian Government
- State Government
- Local Government
- Industry
- Traditional Owners
- Landcare and Community groups
- Non Government Organisations
- Research and Education
- Landholders
- The public



## Investment

- Coordinate effort and invest in actions that maximise outcomes in priority areas (including mechanisms like voluntary conservation agreements).
- Collaborate with key partners on implementation, monitoring and reporting.
- Manage and/or acquire regional priority areas.
- Enhance the capacity and resources of community.
- Support education and raise awareness.
- Support and recognise landholders and people involved with delivering on ground action.



# Economic understanding

## Managing What Matters

### Understanding of the cost of inaction:

- The social values alone of not achieving the NRM Plan Targets are almost \$4.9 billion over the period to 2031 (present value over \$2.0 billion).
- Significant cost to industry eg. an \$8 billion reduction in turnover in tourism, water treatment costs could increase by in excess of \$32 million per annum by 2031.



## Opportunities

### **Better coordination of:**

- efforts of natural resource managers across all levels of government, industry and community to achieve regional NRM targets and others eg. Q2
- Invest for Multiple benefits
- investment across portfolios (incl. Health and Infrastructure) and boundaries for effective and efficient delivery at a lower economic cost to the community.

Investors including Australian Government (eg Carbon Farming Initiative) are attracted to coordinated regional and cross regional initiatives as guided by the SEQ

NRM Plan.



# Opportunities

Offsets - NRM Plan and ES Framework provides options to address challenges relating to identifying and delivering environmental offsets

Offset banking/register

Future of our beaches, bays and waterways business case

Policy coordination



# Issues to be addressed

Data availability

Technical Capacity

Perverse outcomes from legislation and policy

- Vegetation Management Act
- Perception everything protected outside of urban footprint
- Guidelines not specific enough for regional requirements

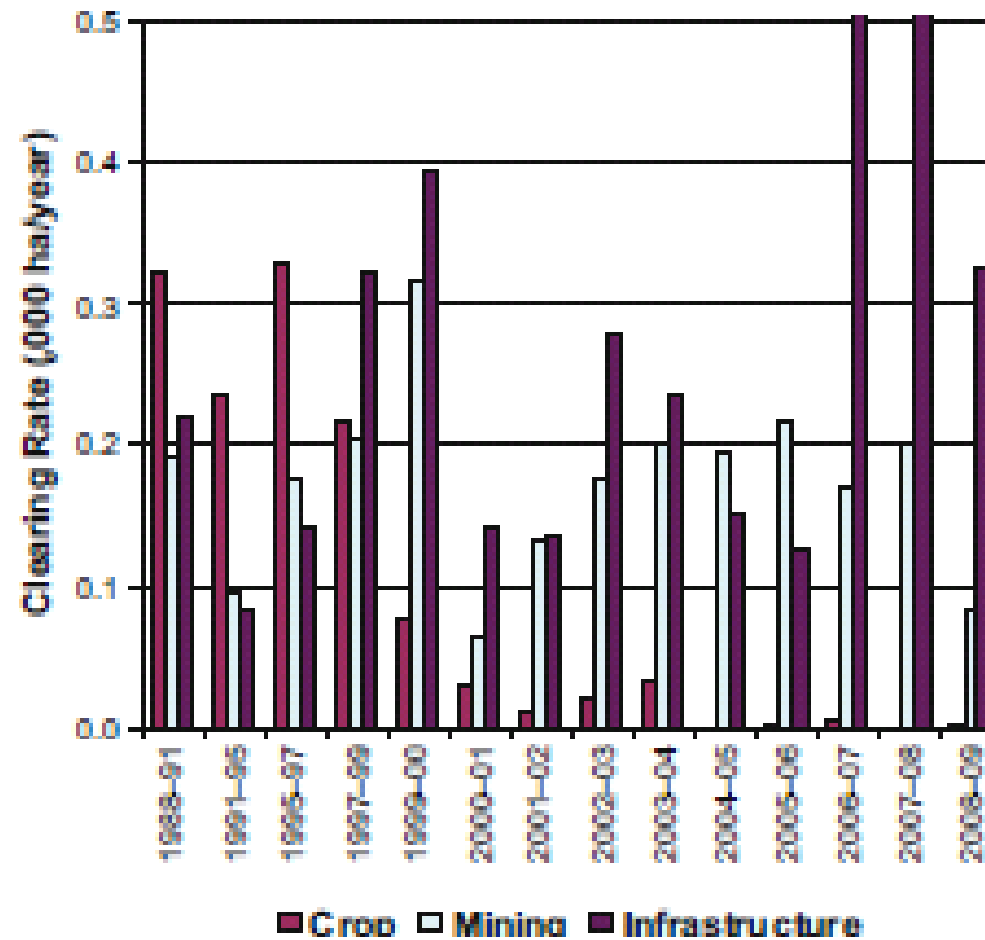


Figure 4. Woody vegetation clearing rates in the South East Queensland Catchments NRM region by replacement land cover.



## Issues to be addressed

- Lack of awareness and commitment to the SEQ Regional Plan and as a result NRM Plan targets from significant areas of government and industry.
- Confusion between the NRM Plan and ES Framework and how to integrate the two into policies and plans.
- Confusion over the translation of policies in the SEQ RP into criteria for assessing local government planning schemes and future development and infrastructure provision.



## Issues to be addressed

- No established consistent regional investment mechanism for achieving NRM Plan Targets or for supporting landholders to provide ecosystem services.
- Future changes to funding arrangements - Australian and State Government
- Effective monitoring and evaluation

Thankyou

