



EIA Practitioner Perspectives

Philip Heath
Principal, Sinclair Knight Merz

Tips and Tricks – Best Practice in
Environment Effects Statements
EIANZ/ NELA/ PIA Seminar
November 2011

SINCLAIR KNIGHT MERZ

SKM

What makes a successful EES?

Statutory requirements complied with

On time and budget

Stakeholder engagement

Ministerial authorisation to exhibit

Technically sound EES

Smooth progression to Inquiry

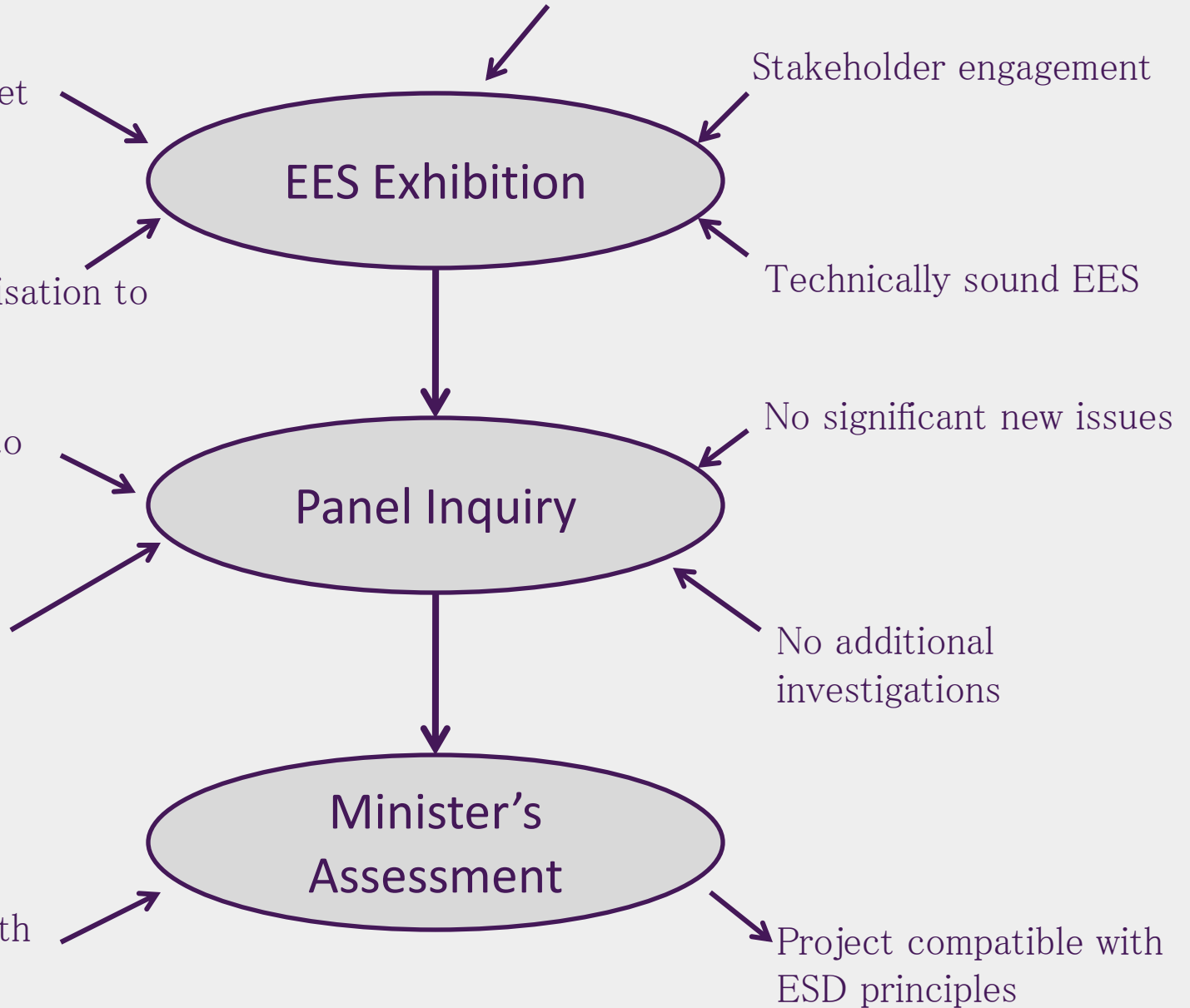
No significant new issues

No methodology disagreements

No additional investigations

Timely approval with limited additional conditions

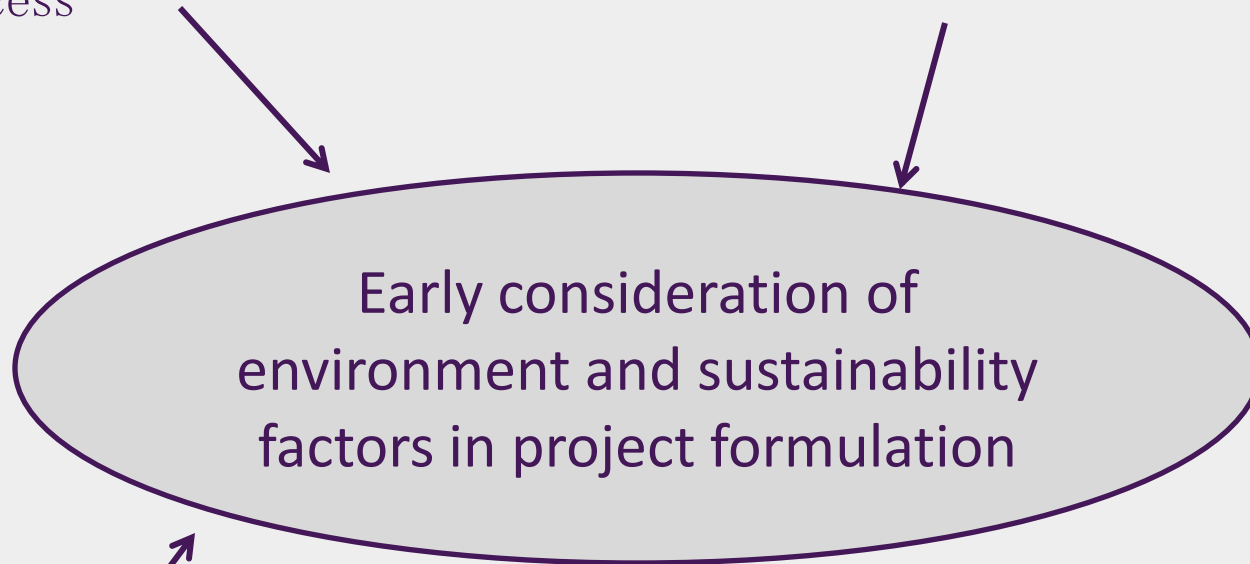
Project compatible with ESD principles



Project Formulation Phase

Early commencement of EIA process

Determine EIA boundaries and approach to project formulation



Systematic and transparent consideration of alternatives

Demonstrated project rationale

SINCLAIR KNIGHT MERZ

SKM

Project Formulation Phase

EES

Use of EES process

Scoresby Transport Corridor EES



Mt. Stirling Alpine Resort EES



Apollo Bay Wastewater Strategy EES



Minerva Offshore Gas Field EES



Portland Wind Energy Project EES



Victorian Desalination Plant EES



Sugarloaf Pipeline EIA



Department of Infrastructure
Office of Planning and Heritage
May 1996

Mount Stirling

Environment Effects Statement

TECHNICAL APPENDICES
VOLUME 1



SINCLAIR KNIGHT MERZ

Sinclair Knight Merz Pty Ltd
ACN 001 024 095
590 Orrong Road
Armadale Vic 3143
Telephone: 9248 3100
Facsimile: 9248 3440



Department of
Planning and
Development
Government
of Victoria

PO Box 2240T
Melbourne
Victoria 3001

SINCLAIR KNIGHT MERZ

SKM



COLAC REGION WATER

**APOLLO BAY
WASTEWATER TREATMENT
PLANT
ENVIRONMENT EFFECTS
STATEMENT**

Volume 1



April 1995

SINCLAIR KNIGHT MERZ

SINCLAIR KNIGHT MERZ

SKM

Portland Wind Energy Project EES

Portland Wind Energy Project
Environment Effects Statement
and Planning Report

Vol.1 Main Document



SINCLAIR KNIGHT MERZ



Victorian Desalination Plant EES

Department of
Sustainability and
Environment

Synthesis of environmental effects

Victorian Desalination Project
Environment Effects Statement Volume 1



A Victorian Government project



SINCLAIR KNIGHT MERZ

SKM

Pre-EES Phase

Desk-top scoping studies

Early engagement with authorities



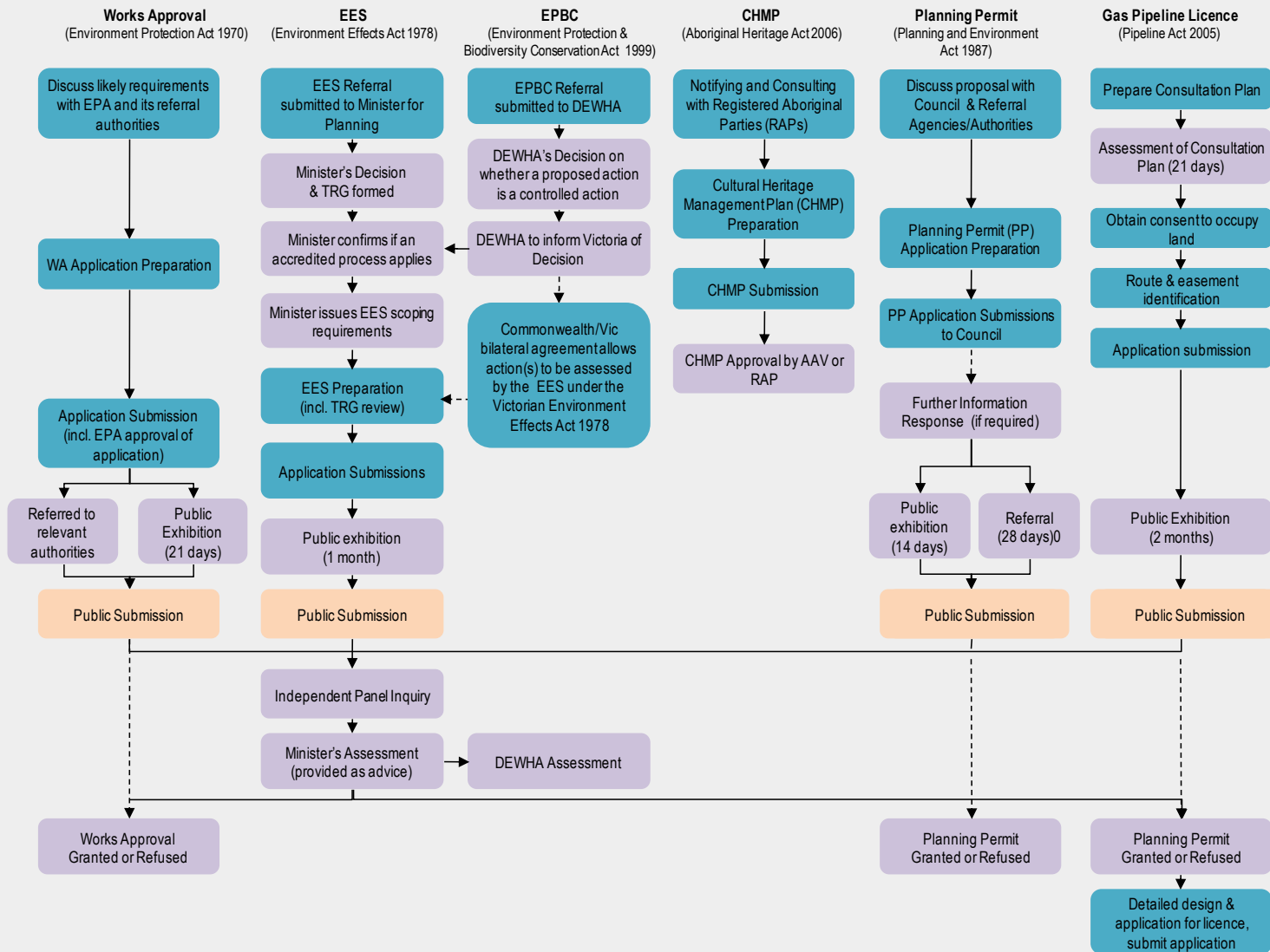
Stakeholder analysis

Coordination of all required approvals

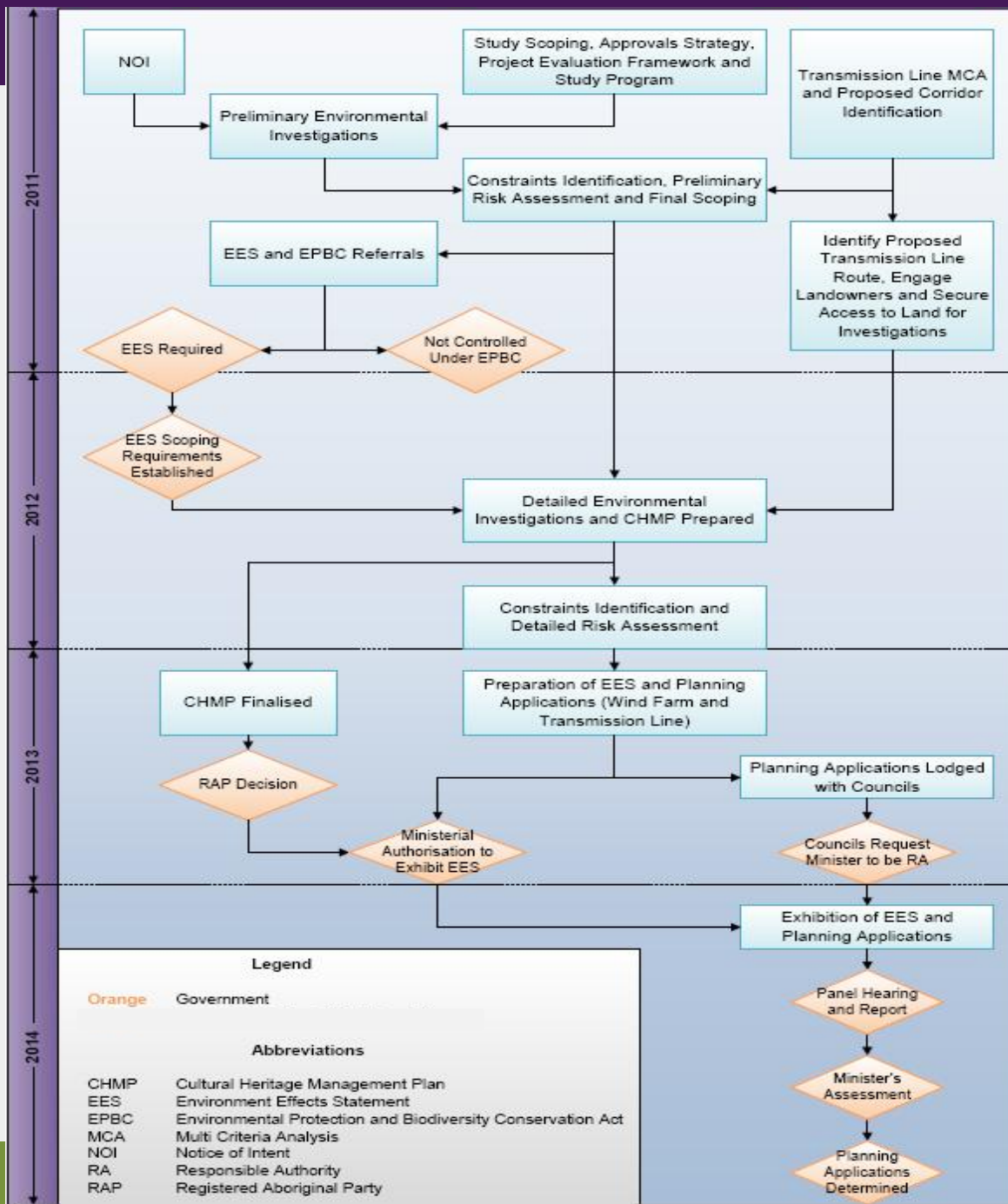
SINCLAIR KNIGHT MERZ

SKM

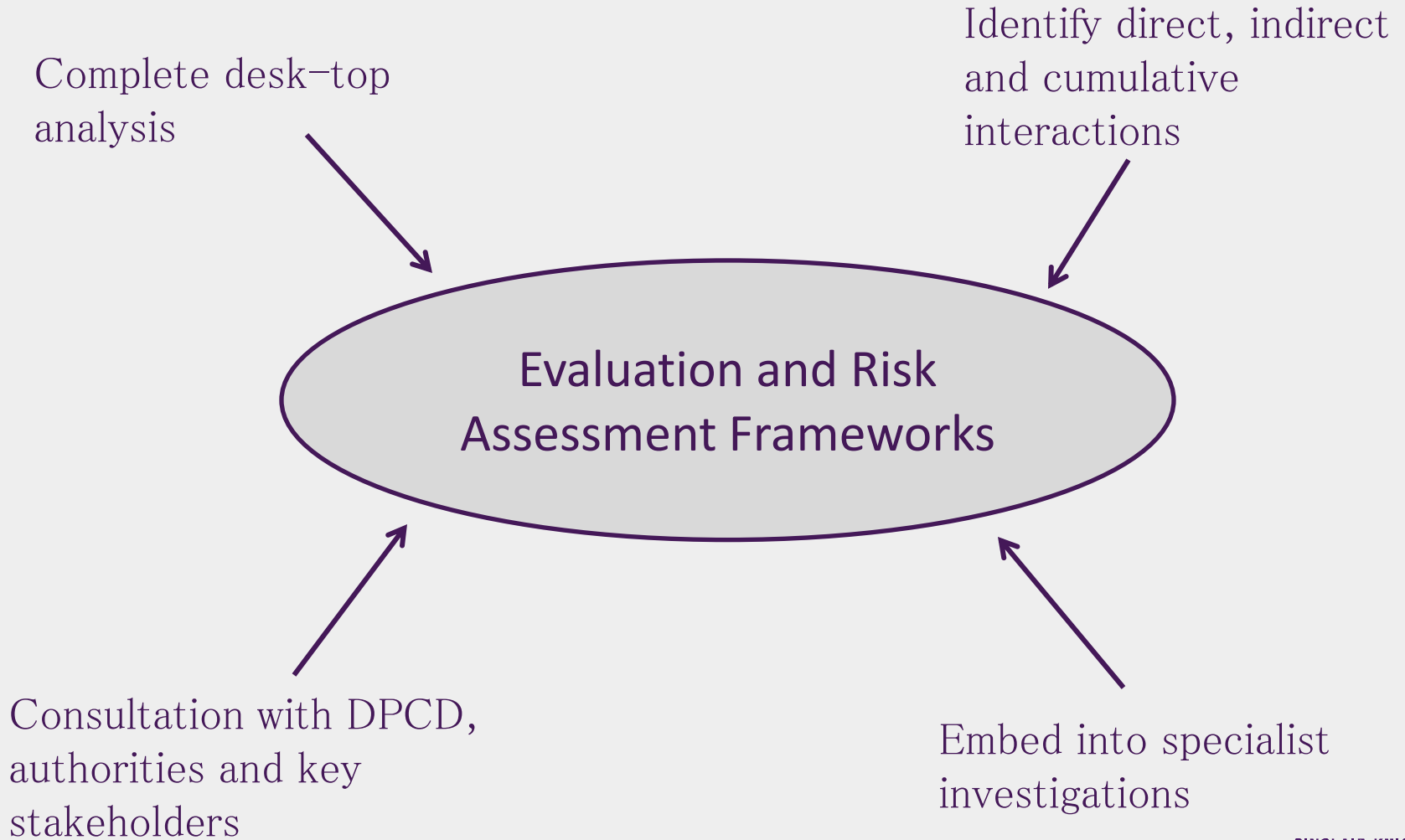
Planning Approvals Strategy



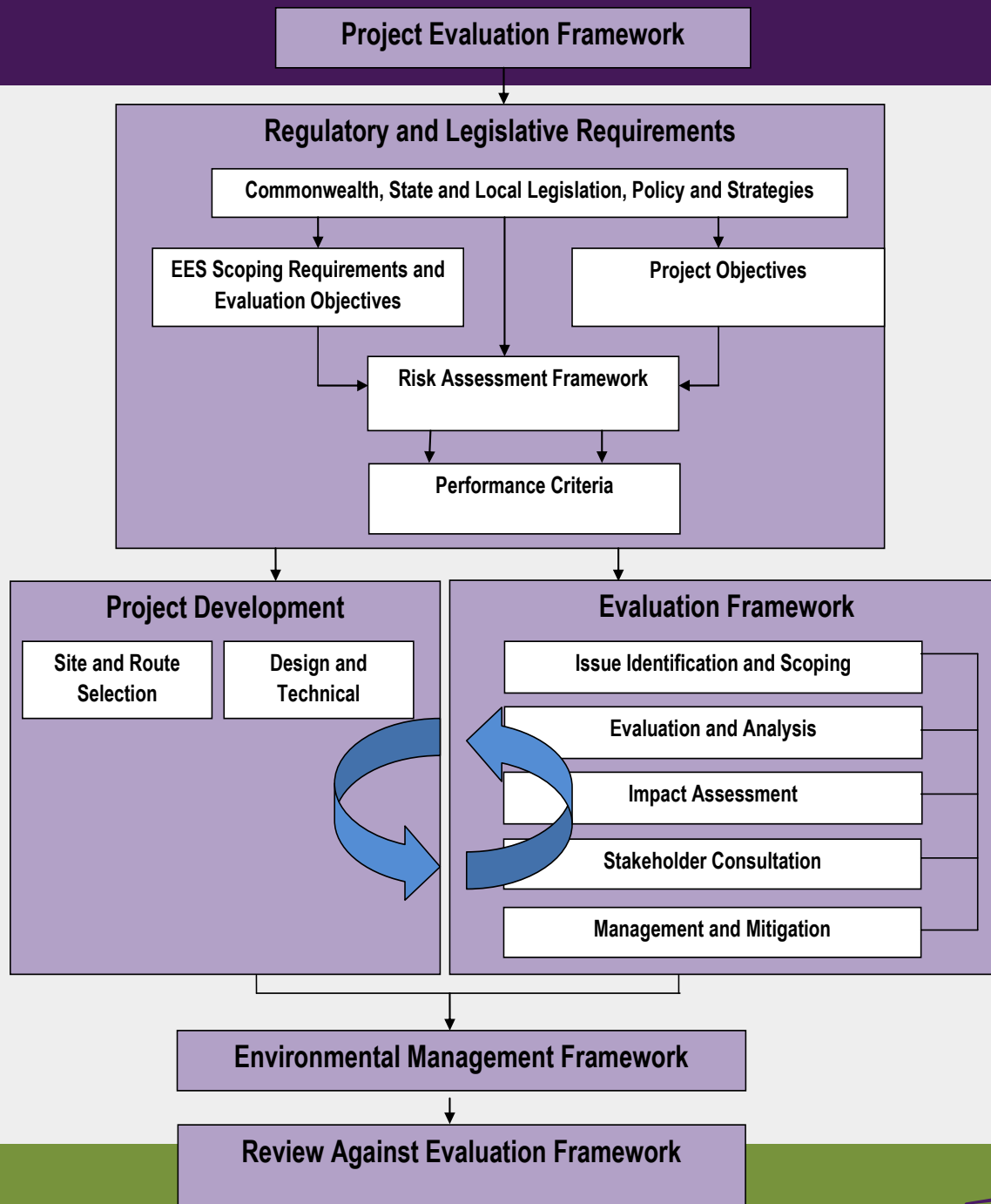
Planning Approvals Strategy



Scoping and Initiation Phase



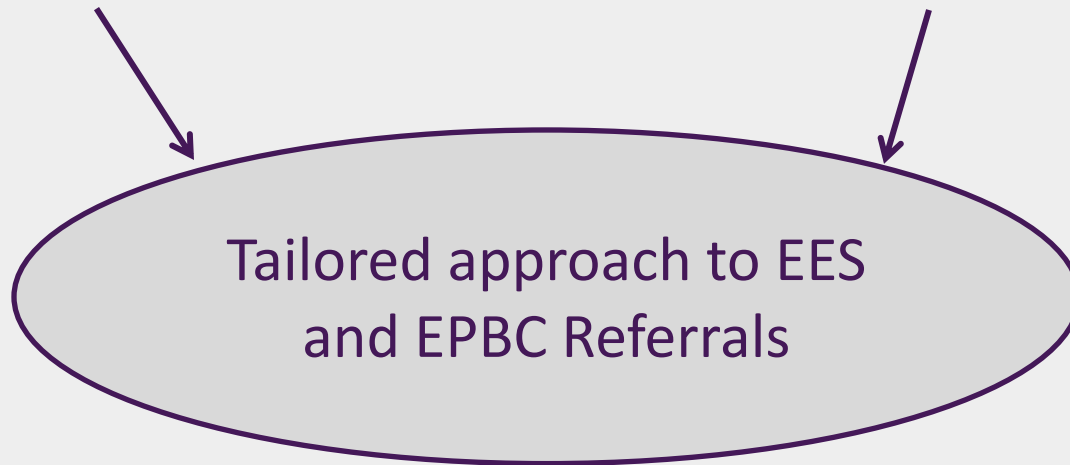
Project Evaluation Framework



EES and EPBC Referrals

Level of investigation determined by
Planning Approvals Strategy

Progressive consultation with
DPCD and DSEWPaC



Tailored approach to EES
and EPBC Referrals

Early submission enables
assessment process to be finalised

SINCLAIR KNIGHT MERZ

SKM

Detailed EES Investigations Phase

Integrated study team – frameworks, templates, GIS

Regular communication – inter-dependencies, stakeholder issues



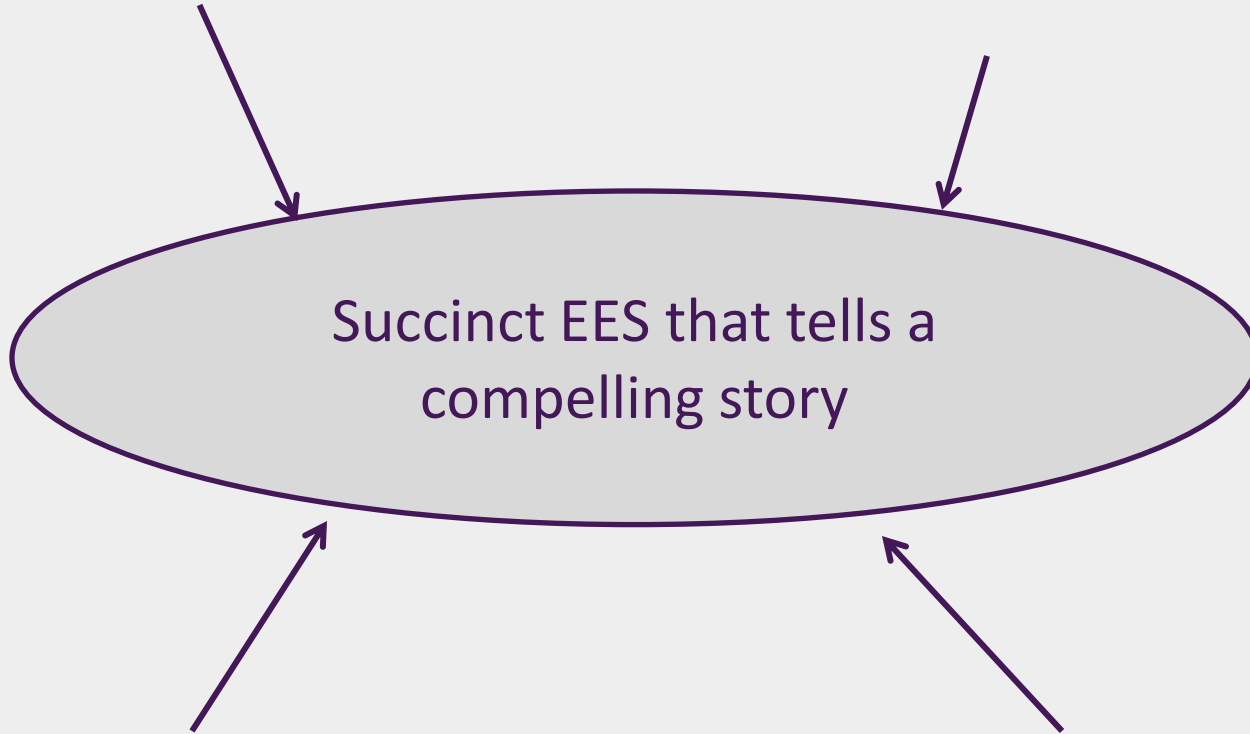
Maximise opportunities provided by TRG process

Peer Reviews

EES Preparation Phase

Early agreement on EES structure

Progressive development of EES



Succinct EES that tells a compelling story

Integrated approach that draws diverse elements together

Regular liaison with DPCD

SINCLAIR KNIGHT MERZ

SKM



Concluding Comments

- 7 Tips and 19 Tricks – just the start!
- Set-up phase is critically important
- Early consideration of environmental factors fundamental